



MAPLE HEIGHTS TLCI: SOUTHGATE CONNECTIVITY STUDY
COMMUNITY MEETING #3 – MARCH 31, 2021





Jefferson Avenue Modular Home



Farmer Jones Indoor Market Grand Re-Opening

MOODY'S
INVESTORS SERVICE
Rating Action: Moody's upgrades Maple Heights, OH to Ba3 from B2; outlook revised to positive



Dedicated Medical Center Grand Opening



White House Auto Detailing Grand Opening

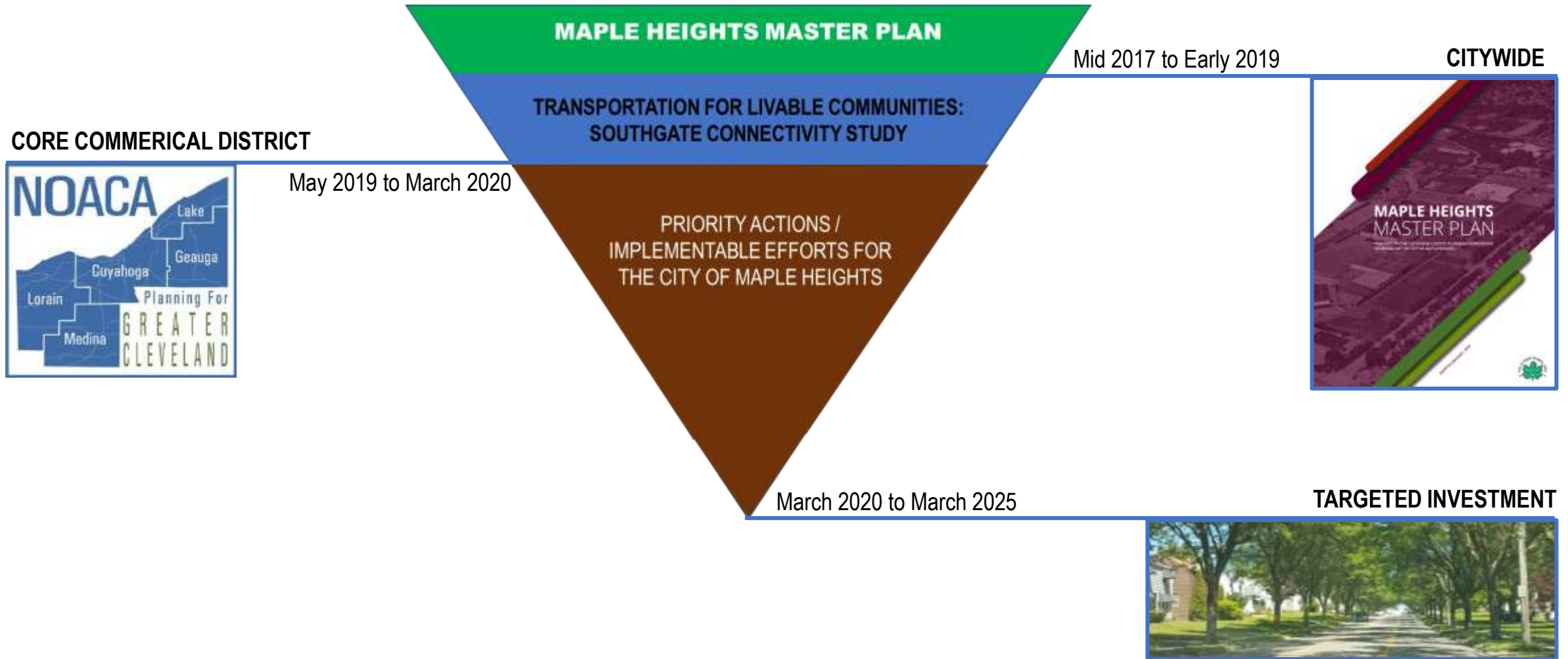




RECAP

OVERLAYING & COORDINATING PLANNING

Various scales & initiatives



MAPLE HEIGHTS TLCI: SOUTHGATE CONNECTIVITY STUDY
OUR APPROACH

STUDY AREA









581 - Daily Avg. Off
498 - Daily Avg. Off



Center
for Corridors
LIGHTS TLCI:
TE CONNECTIVITY
PORTATION



2. Island Effect - Southgate



3. Path Obstructions



4. Visual Disconnect

MAPLE HEIGHTS TLCI:
SOUTHGATE CONNECTIVITY
STUDY
MISSING CONNECTION

Obstructed Path
1. Lack of Connection at Gateways

OVER 5,500
PARKING SPACES

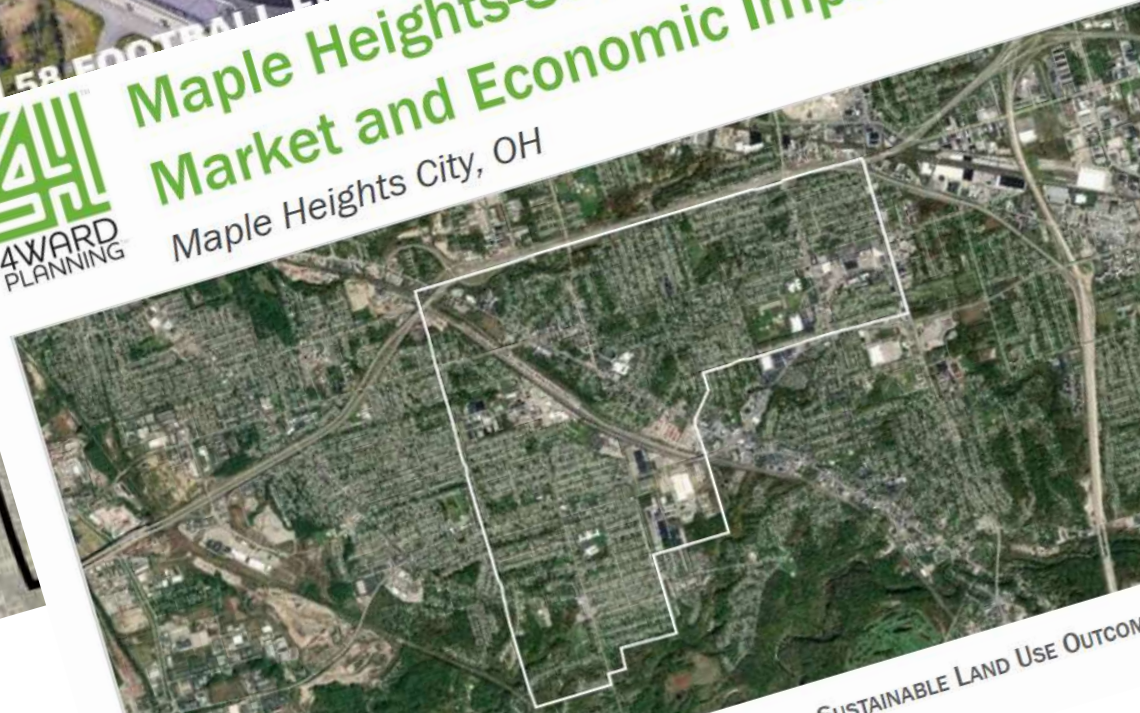
ROUGHLY 80
ACRES OF SURFACE
ARE DESIGNED FOR
PARKING BETWEEN
LIBBY & ROCKSIDE

MAPLE HEIGHTS TLCI:
SOUTHGATE CONNECTIVITY
STUDY
PLANNING STUDY



Maple Heights-Southgate Market and Economic Impact Study

Maple Heights City, OH



SUSTAINABLE LAND USE OUTCOMES



COMMUNITY CONVERSATION



crosswalks



public art



**Maple Heights' IDENTITY is
transforming...**

**How can streets and public spaces help
tell that story?**

AREAS OF FOCUS



IDENTITY

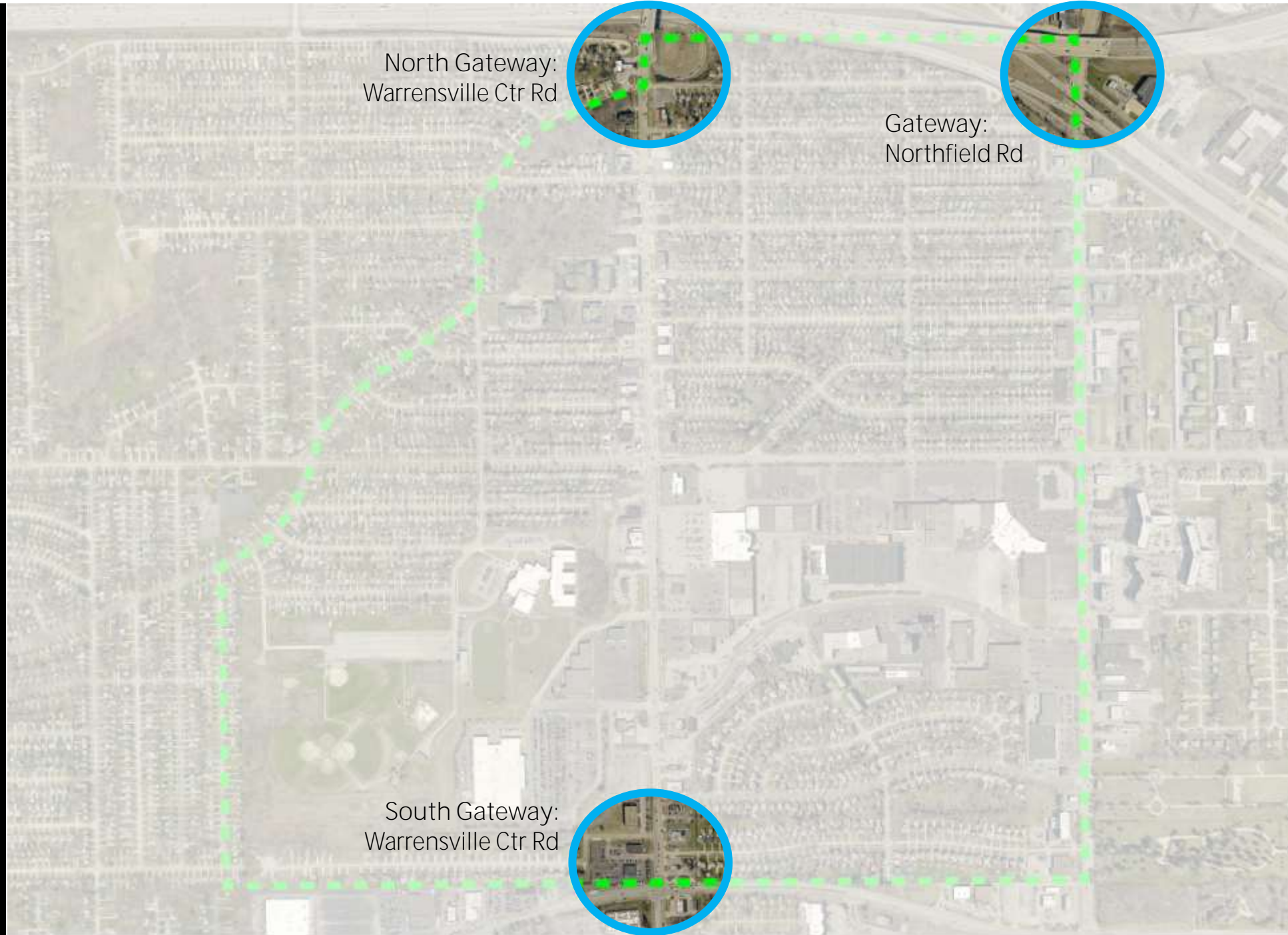
North Gateway:
Warrensville Ctr Rd



Gateway:
Northfield Rd



South Gateway:
Warrensville Ctr Rd





IDENTITY: GATEWAY

NORTHFIELD RD and INTERSTATE 480

STREET TREES

Continue rhythm of trees to create a fullness within corridor

WAYFINDING

Build off current banners and features to distinguish commercial district

PLACE-MAKING

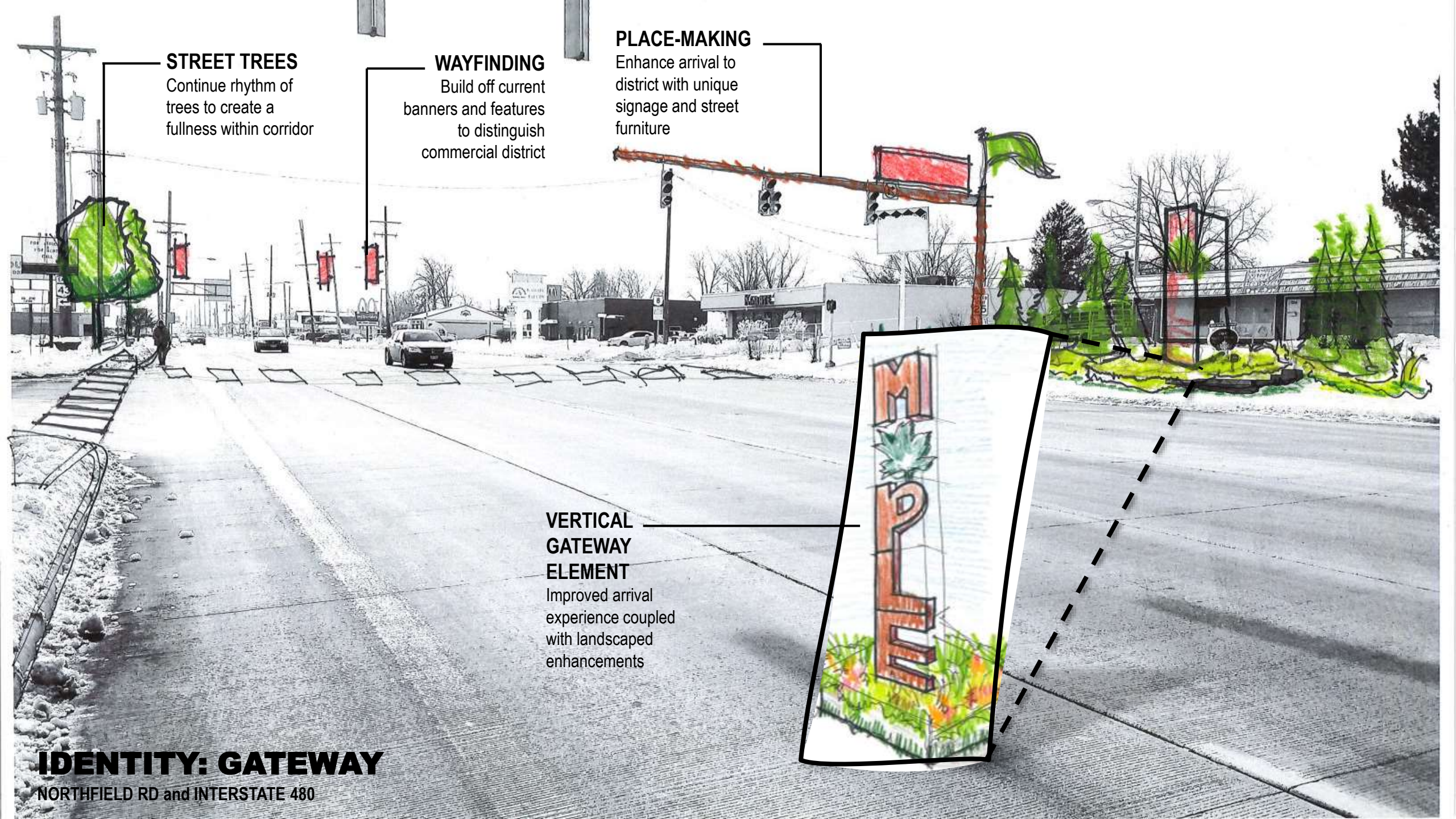
Enhance arrival to district with unique signage and street furniture

VERTICAL GATEWAY ELEMENT

Improved arrival experience coupled with landscaped enhancements

IDENTITY: GATEWAY

NORTHFIELD RD and INTERSTATE 480





IDENTITY: GATEWAY

WARRENSVILLE CENTER RD and MAPLE HEIGHTS BLVD

WAYFINDING

Build off current banners and features to distinguish commercial district

MULTI-MODAL CONNECTION TO STAFFORD PARK VIA MAPLE HTS BLVD



STREETSCAPE

Break up expansive roadway with median and dedicated pedestrian crosswalk



GATEWAY ELEMENT

Improved arrival experience coupled with landscaped enhancements

IDENTITY: GATEWAY

WARRENSVILLE CENTER RD and MAPLE HEIGHTS BLVD

IDENTITY: GATEWAY

WARRENSVILLE CENTER RD and ROCKSIDE RD

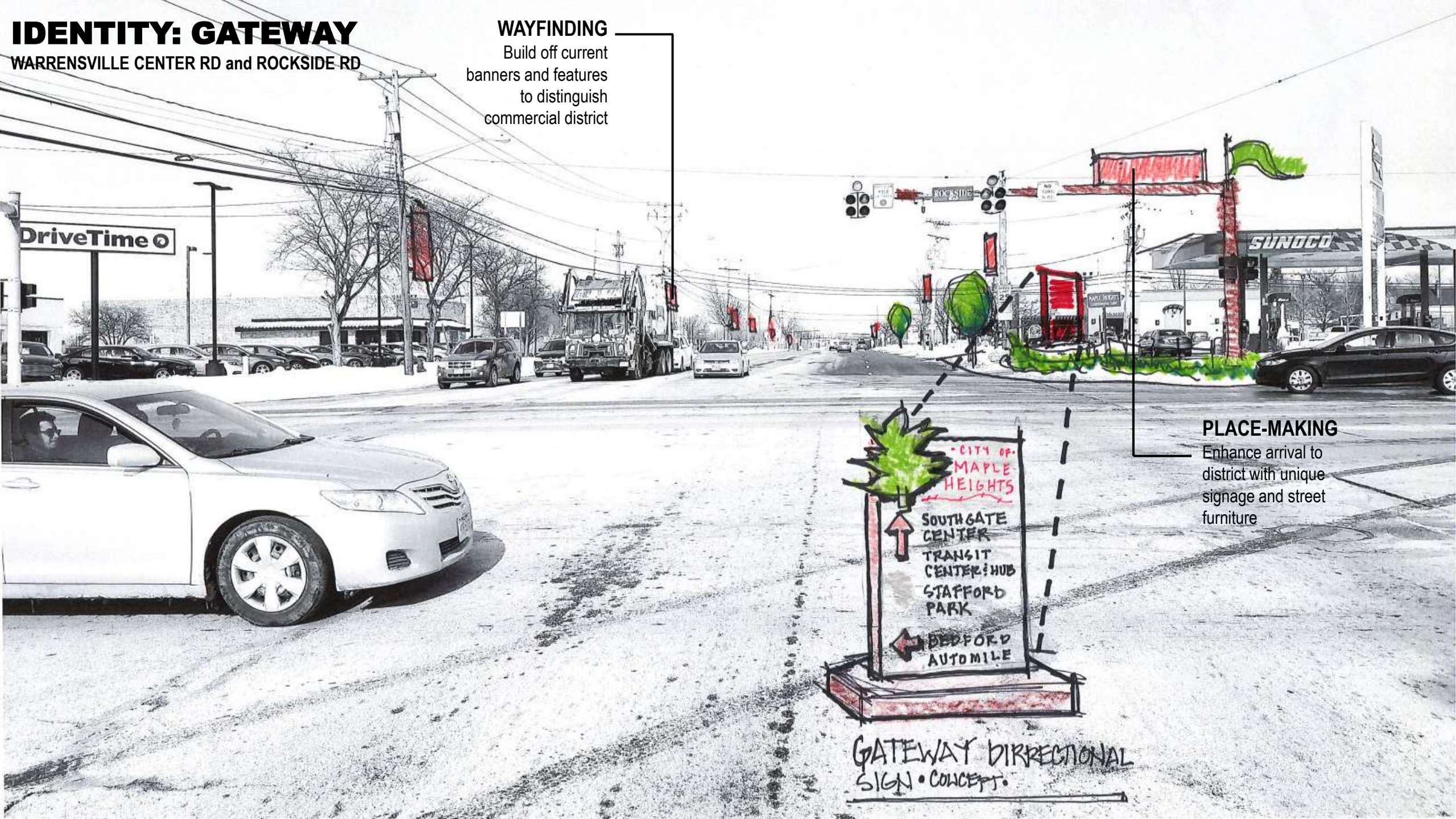


IDENTITY: GATEWAY

WARRENSVILLE CENTER RD and ROCKSIDE RD

WAYFINDING

Build off current banners and features to distinguish commercial district



PLACE-MAKING

Enhance arrival to district with unique signage and street furniture



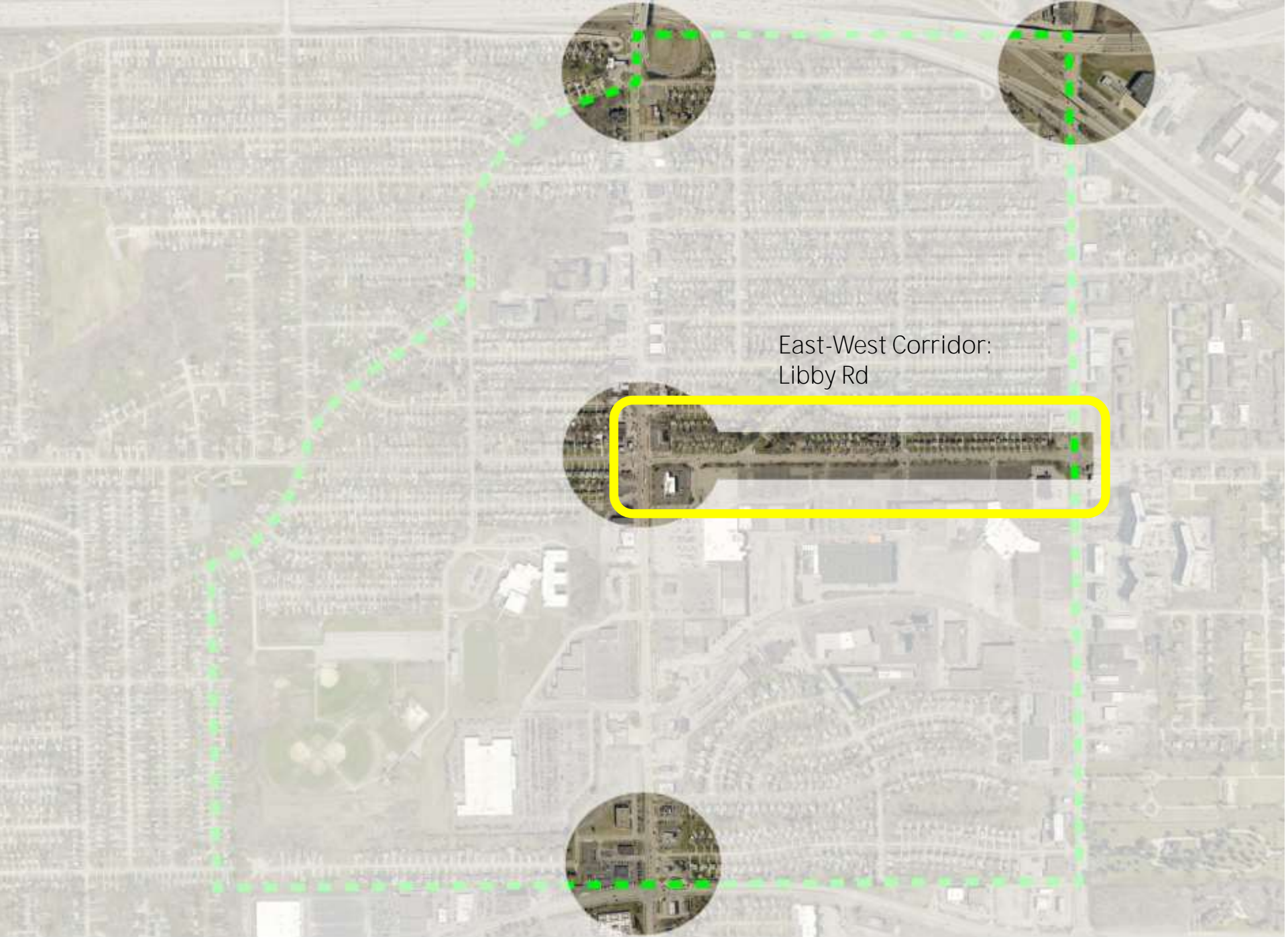
GATEWAY BIRRECTIONAL SIGN • CONCEPT.

MOVEMENT

comes in different
shapes and forms...

How does it feel to move through
your City?

MOVEMENT



East-West Corridor:
Libby Rd

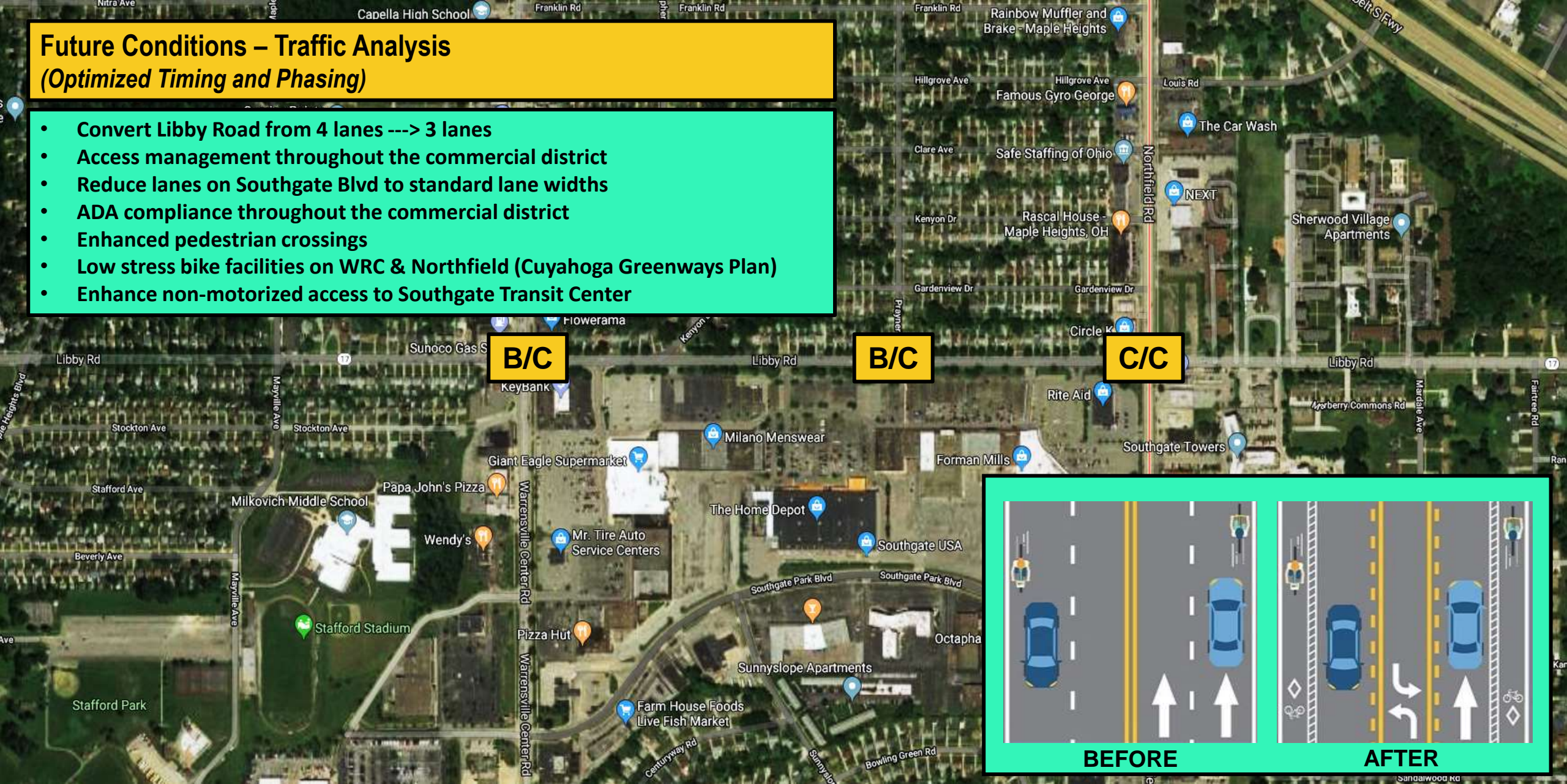
LIBBY RD



Future Conditions – Traffic Analysis

(Optimized Timing and Phasing)

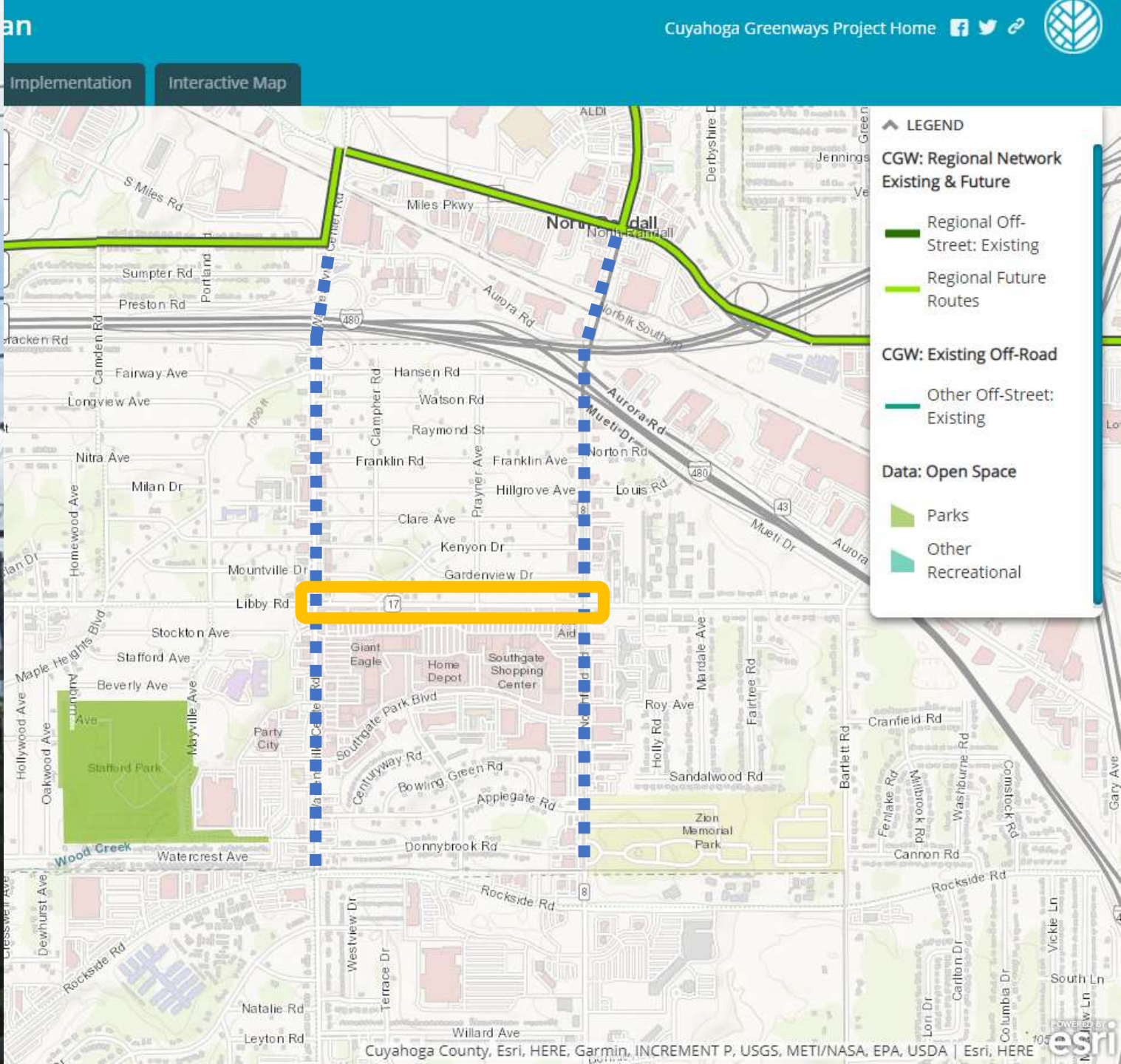
- Convert Libby Road from 4 lanes ---> 3 lanes
- Access management throughout the commercial district
- Reduce lanes on Southgate Blvd to standard lane widths
- ADA compliance throughout the commercial district
- Enhanced pedestrian crossings
- Low stress bike facilities on WRC & Northfield (Cuyahoga Greenways Plan)
- Enhance non-motorized access to Southgate Transit Center

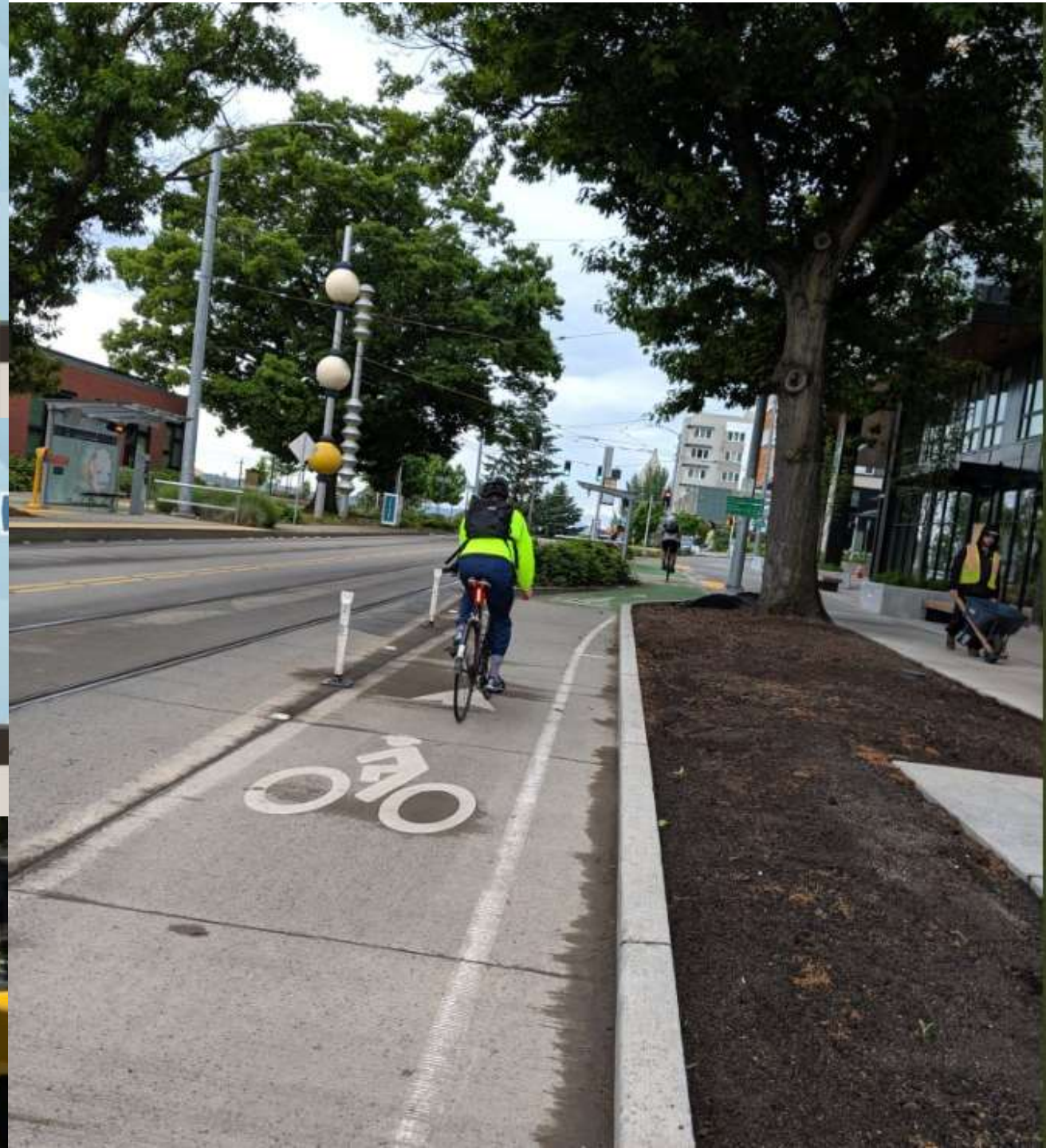


BEFORE

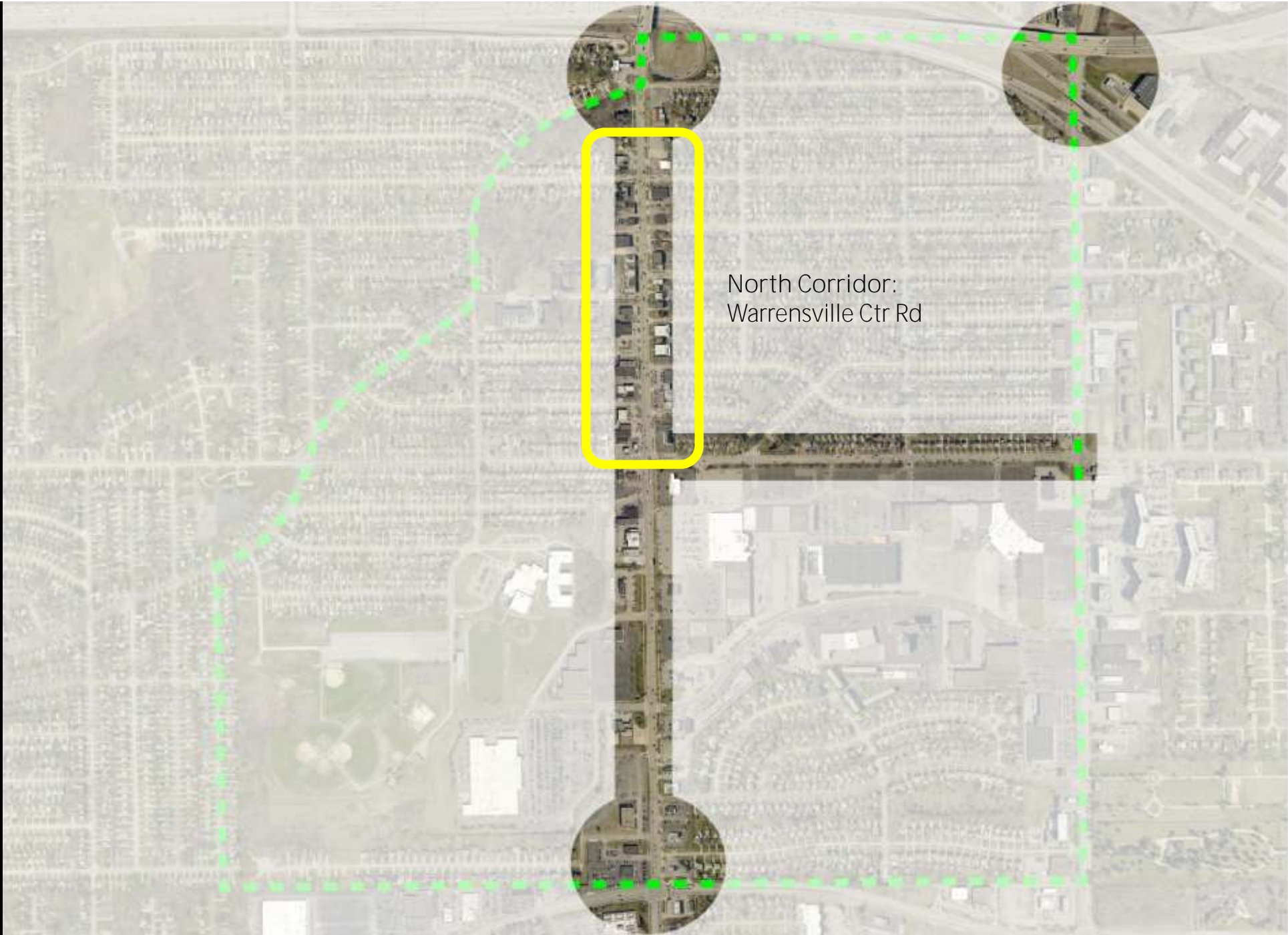
AFTER







MOVEMENT



North Corridor:
Warrensville Ctr Rd



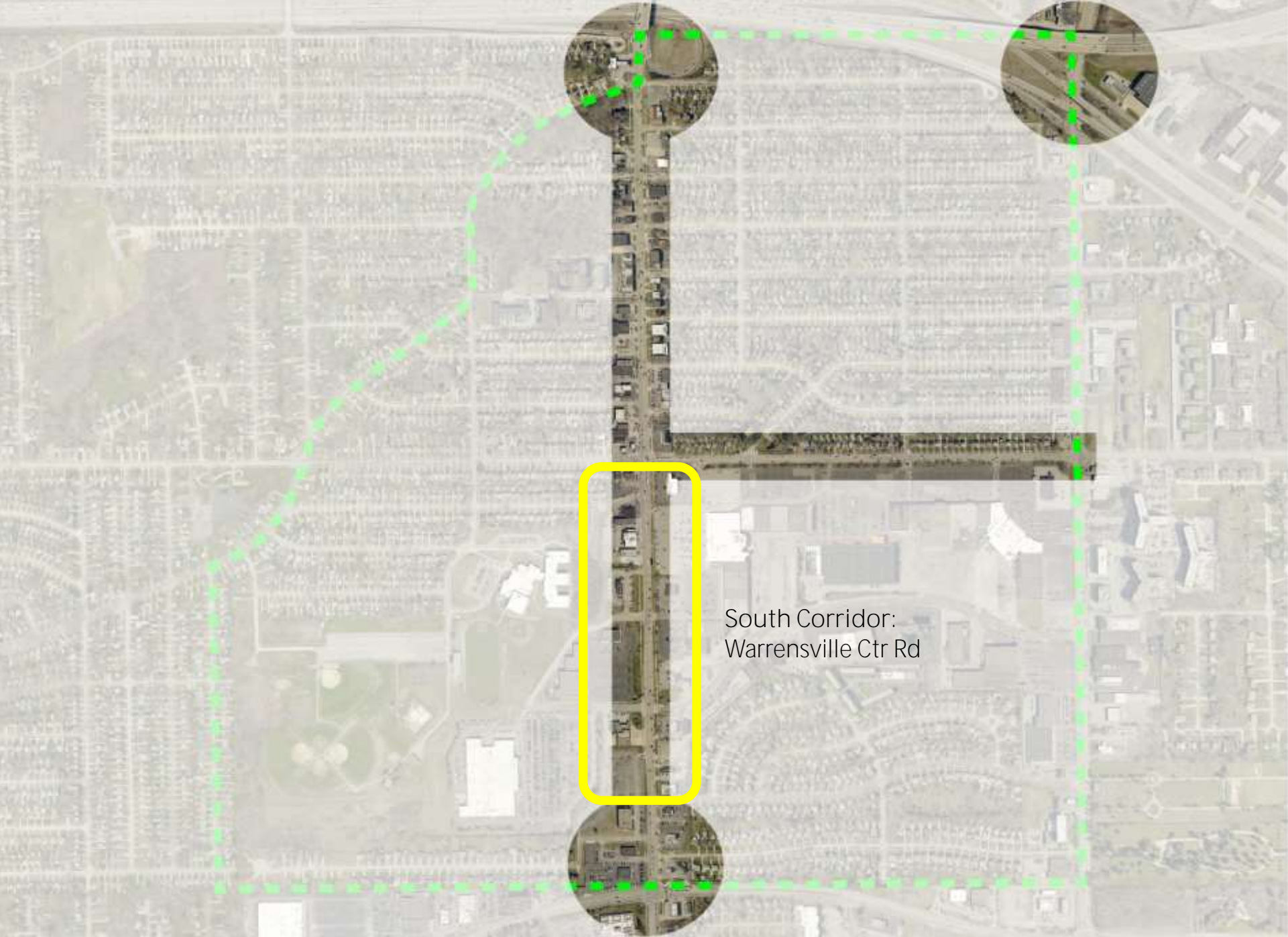
MOVEMENT: CORRIDOR

WARRENSVILLE CENTER RD



PROTECTED AND CLEARLY IDENTIFIED CROSSING

MOVEMENT

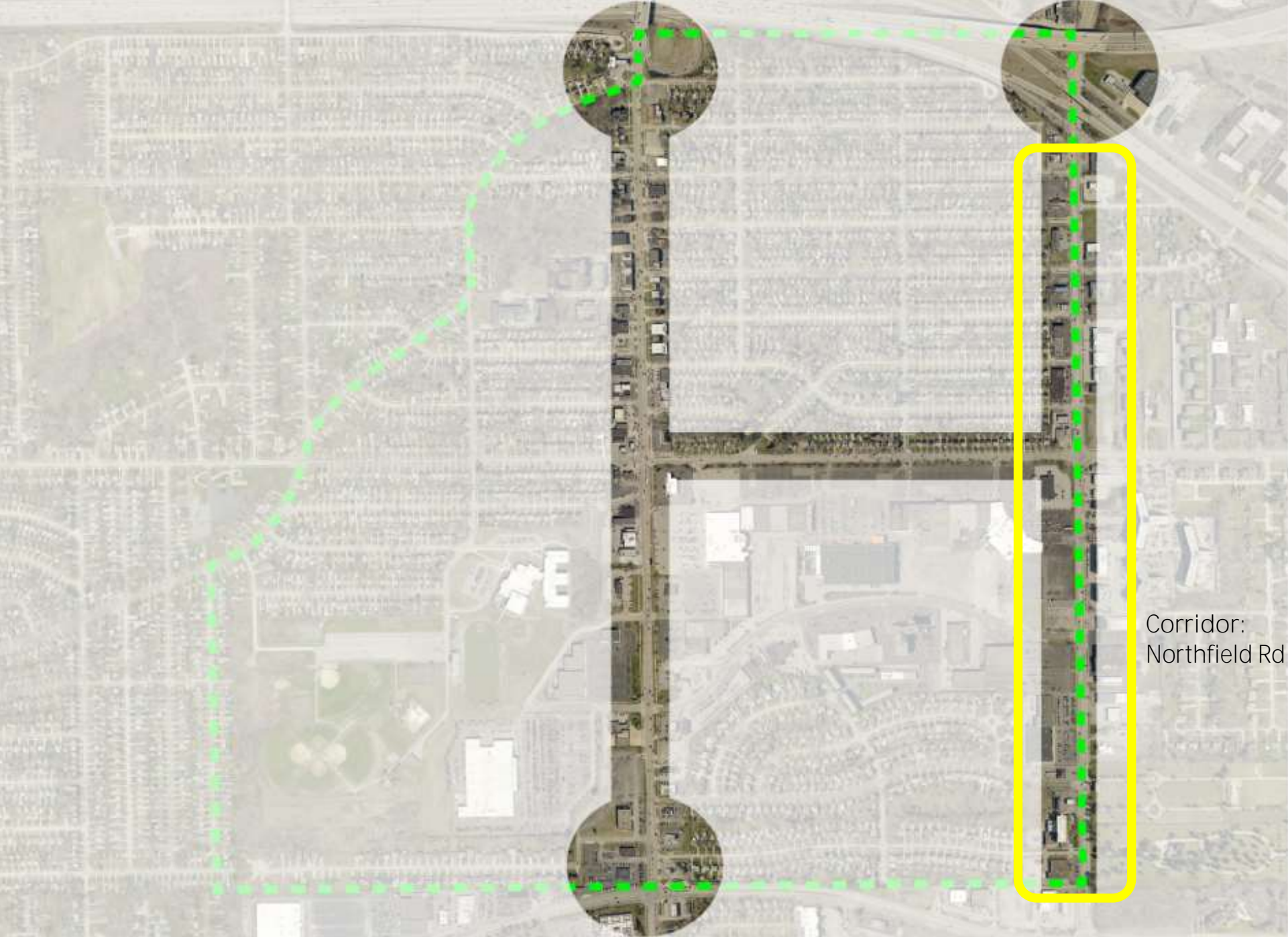


South Corridor:
Warrensville Ctr Rd

SOFTENING THE EDGE OF THE PARKING AREAS



MOVEMENT



Corridor:
Northfield Rd



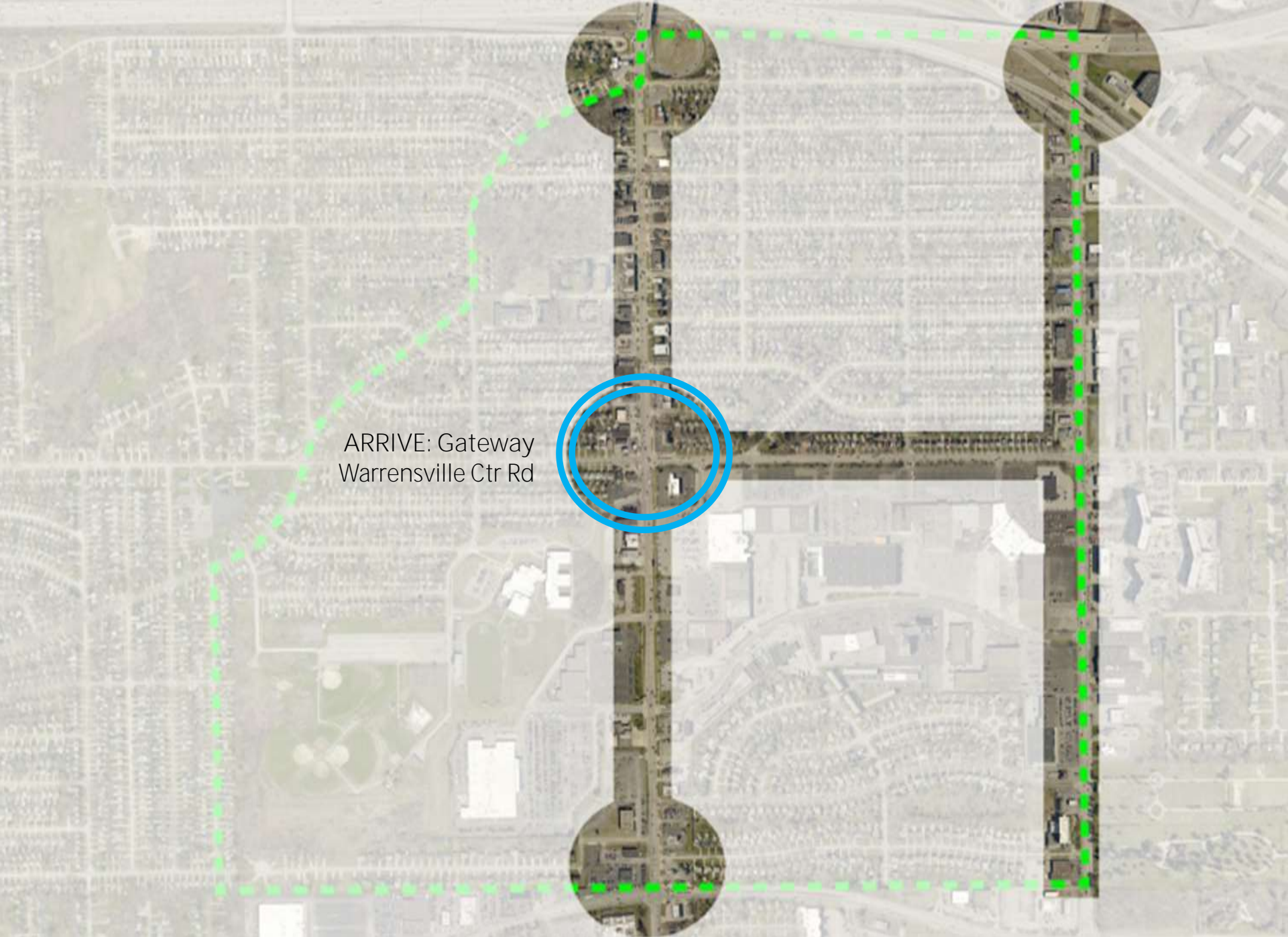
NORTHFIELD RD



EXTENSION OF BANNER PROGRAM & PEDESTRIAN SCALE LIGHTING

**Describe the feeling you have when
you **ARRIVE** at a memorable
destination.**

ARRIVE



ARRIVE: Gateway
Warrensville Ctr Rd



ARRIVE: GATEWAY
WARRENSVILLE CENTER RD and LIBBY RD

WAYFINDING

Build off current banners and features to distinguish commercial district

CENTER ENTRY

Improved pedestrian experience to Giant Eagle entry

STREETSCAPE

Break up expansive roadway with median and dedicated pedestrian crosswalk

PLACE-MAKING

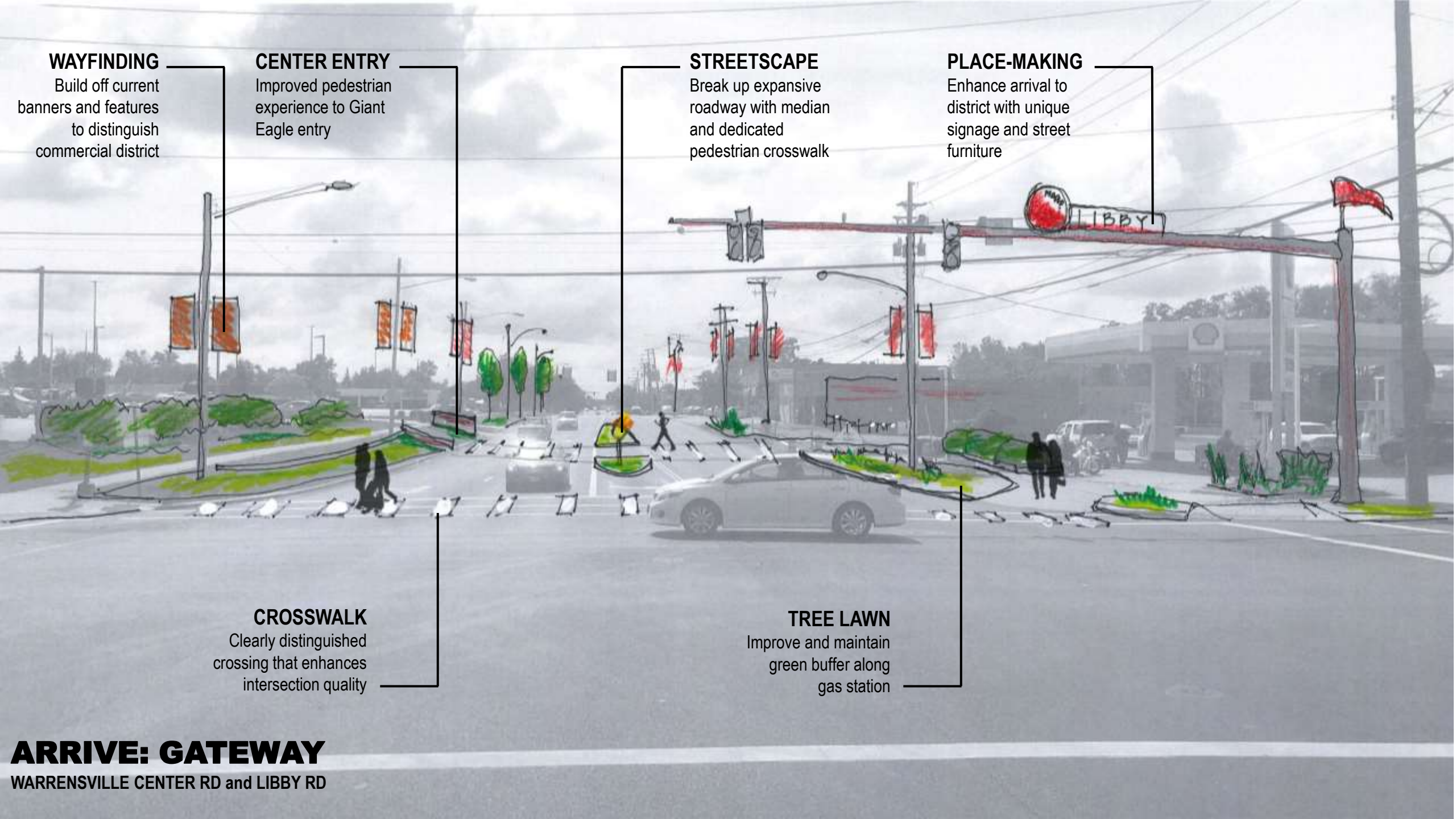
Enhance arrival to district with unique signage and street furniture

CROSSWALK

Clearly distinguished crossing that enhances intersection quality

TREE LAWN

Improve and maintain green buffer along gas station



TAKING ACTION

STANBRO DRIVE

Item	Description
1	Improvement and placement of directional signage for parts of Libby Rd and Warrenville Ave, Libby Rd and
2	Align signage at park entrances at Maple Hill
3	Eliminate a portion of cross-park trees
4	Vertical striped crosswalks at Libby Rd and Warrenville Ave and new landscaping
5	Vertical striped crosswalks at Libby Rd and Warrenville Ave at Warrenville Middle School
6	Installation of trail head elements at Stanbro Ave with proposed trail head elements at Stanbro Ave with a natural barrier that continues a barrier with a natural barrier that continues a present path for non-vehicular modes of transport
7	Explore the ability to create and extend four lanes of a trail based on connection to the east while reducing the connection to the east
8	Trailhead elements, categorized as a trailhead program in collaboration with existing trailhead program in collaboration with existing trailhead program in collaboration with existing trailhead program
9	Free parking program in collaboration with existing trailhead program in collaboration with existing trailhead program
10	Programmed space for food trucks, community

SOUTH GATEWAY - ROCKSIDE RD

Item	Description
1	Addition of gateway element that announces arrival and provides wayfinding for the commercial district
2	Enhancement of banner program along Rockside Dr & B
3	Potential elimination of cross-park trees at SE corner of intersection
4	Installation of center median at intersection, removing portion of the existing center turning lane
5	Vertical stripe of crosswalk for clear identification of pedestrian crossing
6	Explore addition of bus shelters to improve transit mode as improvements
7	Enhance City of Maple Heights Welcome Sign
8	Add and planting of trees to enhance tree s

SOUTH GATEWAY - WARRENVILLE

Item	Description
1	Commercial district signage
2	Wayfinding and improvement signage at the of
3	Incorporate roadway into vertical of way Libby and Warrenville, Warrenville and other greenery
4	Extension of pedestrian path to the south side
5	Vertical striped crosswalks at all of pedestrian on
6	Vertical striped crosswalks at all of pedestrian on
7	Added signage at Program Rd Libby Rd and S
8	Explore addition of bus shelters to improve transit
9	Programmed space for food trucks, community

NORTH GATEWAY - WARRENVILLE CENTER RD

Item	Description
1	Describe road to establish a edge between Warrenville Center and Stanbro
2	Enhancement of existing banner program along main corridor
3	Addition of wayfinding signage at City entry, particularly directional signage to Stanbro Park
4	Vertical striped crosswalks for clear identification of pedestrian crossing
5	Wayfinding signage along Warrenville Road
6	Study feasibility of bus lane at the Maple Heights Blvd to encourage multi-modal access
7	Enhance City of Maple Heights Welcome Signage
8	Strategic and presentation of the gateway at Maple Heights Blvd and Warrenville Dr & B
9	Strategic and presentation of the gateway at Maple Heights Blvd and Warrenville Dr & B

NORTH GATEWAY - NORTHELD

Item	Description
1	Addition of gateway element that announces arrival and provides wayfinding for the commercial district
2	Enhancement of banner program along Northfield Rd
3	Hand-drawn trees to create balance with the Northfield Rd centerline and to traffic calming
4	Vertical striped crosswalks for clear identification of pedestrian crossing
5	Enhance City of Maple Heights Welcome Signage

WARRENVILLE CENTER RD - LIBBY RD

Item	Description
1	Announcement of arrival through community with signage or installation
2	Hand-drawn trees to create balance with the Warrenville Dr & B corridor
3	Wayfinding and improvement signage at the of
4	Vertical striped crosswalks for clear identification of pedestrian crossing
5	Wayfinding signage along Warrenville Road
6	Study feasibility of bus lane at the Maple Heights Blvd to encourage multi-modal access
7	Enhance City of Maple Heights Welcome Signage
8	Strategic and presentation of the gateway at Maple Heights Blvd and Warrenville Dr & B

IMMEDIATE - see to do this year
 NEAR TERM - see to do this year
 LONG TERM - more than three years

FINCA TLCD, CSO Program, DDOF TAP, City of Maple Heights
 FINCA TLCD, CSO Program, DDOF TAP, City of Maple Heights

FINCA TLCD, CSO Program, DDOF TAP, City of Maple Heights
 FINCA TLCD, CSO Program, DDOF TAP, City of Maple Heights

FINCA TLCD, CSO Program, DDOF TAP, City of Maple Heights
 FINCA TLCD, CSO Program, DDOF TAP, City of Maple Heights

FINCA TLCD, CSO Program, DDOF TAP, City of Maple Heights
 FINCA TLCD, CSO Program, DDOF TAP, City of Maple Heights

FINCA TLCD, CSO Program, DDOF TAP, City of Maple Heights
 FINCA TLCD, CSO Program, DDOF TAP, City of Maple Heights

FINCA TLCD, CSO Program, DDOF TAP, City of Maple Heights
 FINCA TLCD, CSO Program, DDOF TAP, City of Maple Heights

PRIORITIZING INVESTMENT

For possible next steps, the City could work with NOACA to implement their Street Supplies program, a free roadway “library” of components for temporary transportation projects. These components can be used to test ideas for future permanent installation. Also, listed below are immediate actions with respective funding sources.

LOCATION/INITIATIVE	COST	POTENTIAL FUNDING SOURCES
SOUTH GATEWAY - ROCKSIDE RD		
Addition of gateway element that announces arrival and provides wayfinding for the commercial district	\$\$	NOACA TLCI, CSG Program, ODOT TAP, City of Maple Heights
Enhanced City of Maple Heights Welcome Signage	\$	NOACA TLCI, CSG Program, City of Maple Heights
Enhancement of banner program along Warrensville Ctr Rd	\$	NOACA TLCI, CSG Program, City of Maple Heights
Vertical striped crosswalks for clear identification of pedestrian crossing	\$	CSG Program, ODOT TAP, NOACA TLCI
NORTH GATEWAY - WARRENSVILLE CENTER RD		
Enhanced City of Maple Heights Welcome Signage	\$	NOACA TLCI, CSG Program, ODOT TAP, City of Maple Heights
Strategic forest preservation of tree growth at Maple Heights Blvd and Warrensville Ctr Rd	\$\$	ODNR Natureworks, City of Maple Heights
Decorative fencing to establish edge between Warrensville Church and sidewalk	\$\$	ODOT TAP, TIF, City of Maple Heights
Vertical striped crosswalks for clear identification of pedestrian crossing	\$	CSG Program, ODOT TAP, NOACA TLCI
NORTH GATEWAY - NORTHFIELD RD		
North Gateway Northfield Item 2: Enhancement of banner program along Northfield Rd	\$	NOACA TLCI, NOACA TIP, City of Maple Heights
North Gateway Northfield Item 4: Vertical striped crosswalks for clear identification of pedestrian crossing	\$	CSG Program, ODOT TAP, NOACA TLCI
STAFFORD PARK		
Improvement and placement of directional signage for park at Libby Rd and Mayville Ave, Libby Rd and Maple Heights Blvd, and Stockton Ave and Warrensville Ctr Rd	\$	NOACA TLCI, CSG Program, ODOT TAP, City of Maple Heights
Align signage at park entrances at Maple Heights Blvd and Mayville Ave with city's brand standards	\$	NOACA TLCI, CSG Program, ODOT TAP, City of Maple Heights
Programmed space for food trucks, community events, throughout all months of year	\$	City of Maple Heights
Vertical striped crosswalks at Libby Rd and Mayville Ave, Libby Rd and Maple Heights Blvd, and across Stockton Ave at Warrensville Ctr Rd	\$	CSG Program, ODOT TAP, NOACA TLCI
WARRENSVILLE CENTER ROAD - LIBBY ROAD		
Commercial district wayfinding signage	\$\$	NOACA TLCI, CSG Program, ODOT TAP, City of Maple Heights
Vertical striped crosswalks for clear identification of pedestrian crossing	\$	CSG Program, ODOT TAP, NOACA TLCI

TOP 3 PRIORITIES

- Enhanced City of Maple Heights Welcome Signage
- Vertical striped crosswalks for clear identification of pedestrian crossings
- Align signage at park entrances at Maple Heights Blvd and Mayville Ave with City's brand standards



ARRIVE: GATEWAY
WARRENSVILLE CENTER RD and STOCKTON AVE

MURAL

Place-making feature

DECORATIVE FENCE

Creation of a nice buffer for parking

WAYFINDING

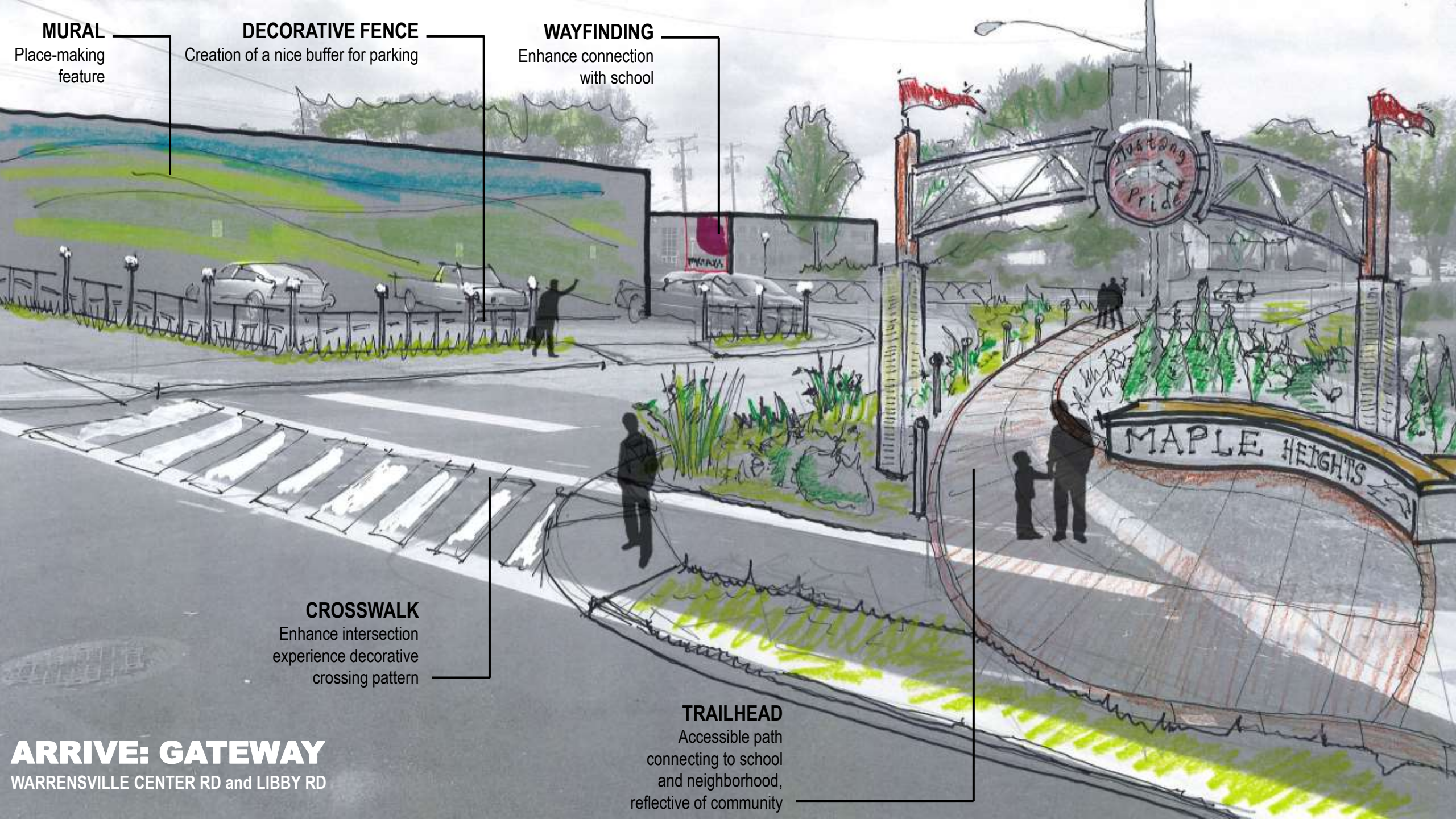
Enhance connection with school

CROSSWALK

Enhance intersection experience decorative crossing pattern

TRAILHEAD

Accessible path connecting to school and neighborhood, reflective of community



ARRIVE: GATEWAY
WARRENSVILLE CENTER RD and LIBBY RD

IDENTITY.

ARRIVE.

MOVEMENT.



THE WINNING CULTURE OF MAPLE HEIGHTS CAN BE STRENGTHENED THROUGH TRANSPORTATION CONNECTIONS AND PLACEMAKING CENTERED AROUND COMMUNITY.