



# Southgate Connectivity Study

**Culminating Community Conversation!**

**Wednesday, March 31st**

**6 - 7:30pm**

Please join us for this final community conversation where we will discuss the final recommendations to improve the quality of transportation and overall experience within the Southgate USA commercial district.

**Join Zoom Meeting**

<https://us02web.zoom.us/j/82358727811?pwd=Q1FYN1kwbUkzU3FuT1dZM2R5SSXZmUT09>

**Zoom ID:** 823 5872 7811

**Password:** 341813

**Dial in:** 301-715-8592





## Last we spoke...

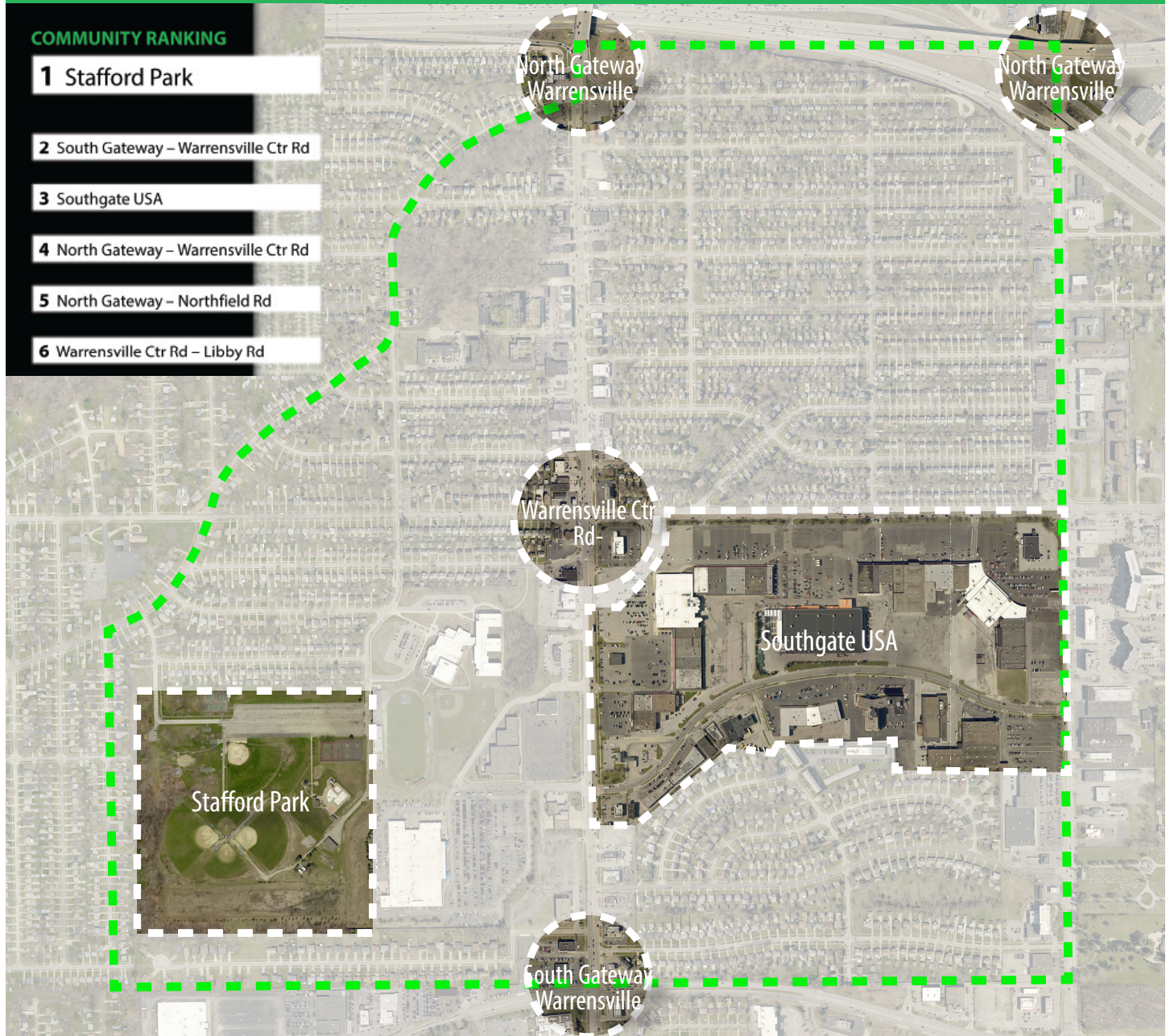
- ✓ 2 Community Discussions: December 2, 2019 & January 28, 2020
- ✓ Areas of focus established within the study area
- ✓ Prioritized improvements to the district
- ✓ Started to re-imagine existing connections

Discussions with residents and stakeholders of the Maple Heights community revealed a desire for a walkable, bicycle friendly community, full of natural vegetation. Transformation of the physical environment has the ability to positively influence health and overall outcomes of the community.

## CREATING A FOCUS

### COMMUNITY RANKING

- 1 Stafford Park
- 2 South Gateway – Warrensville Ctr Rd
- 3 Southgate USA
- 4 North Gateway – Warrensville Ctr Rd
- 5 North Gateway – Northfield Rd
- 6 Warrensville Ctr Rd – Libby Rd





# PRIORITIZING IMPROVEMENTS

Community members ranked their top 3 preferences for both transportation and public space improvements.

Transportation



2. TRANSIT STOPS

3. BIKE LANES

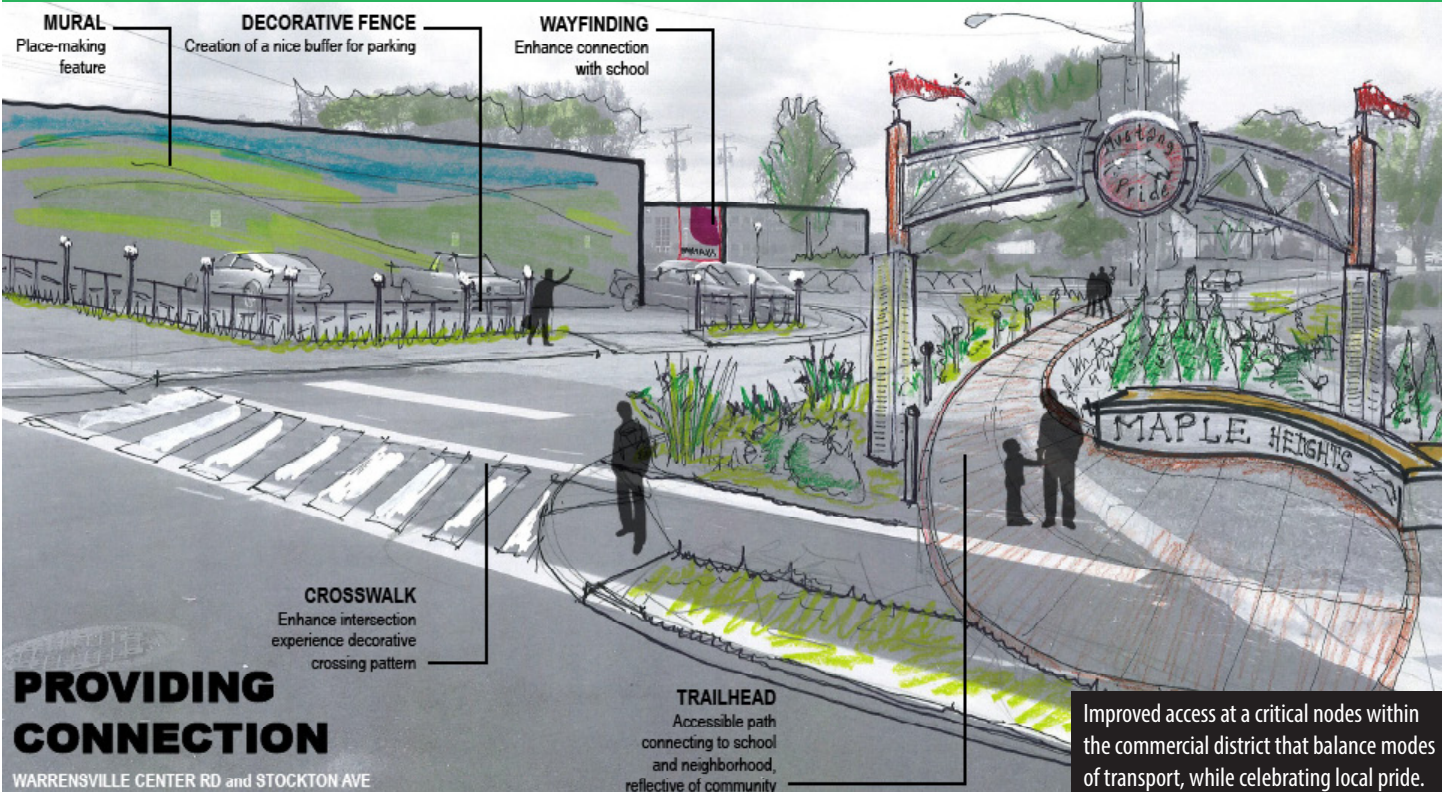
Streetscapes,  
Wayfinding & Public  
Art



2. LANDSCAPING ENHANCEMENTS

3. GATEWAY ELEMENTS/CREATIVE LIGHTING

# RE-IMAGINING EXISTING CONNECTIONS



**PROVIDING CONNECTION**

WARRENSVILLE CENTER RD and STOCKTON AVE

Improved access at a critical nodes within the commercial district that balance modes of transport, while celebrating local pride.