



**MAPLE HEIGHTS TLCI: SOUTHGATE CONNECTIVITY STUDY**  
COMMUNITY MEETING #2 – JANUARY 28, 2020







**Welcome / Sign-In**

**Introductions**

**Project Overview**

**Our Analysis**

**What We've Heard So Far**

**Takeaways & Thoughts**

**Exploring the Possibilities**

**Group Activities**

**AGENDA**





# A Balanced Planning Process

City Architecture – WSP– 4ward Planning Inc.



# Transportation for Livable Communities Initiative (TLCI)

**T**ransportation --- moving **people** safely via all modes of transit

**L**ivable --- providing a quality environment for **people** to enjoy

**C**ommunities --- enhancing **people's** experience within a place

**I**nitiative --- causing action to occur

## Primary Objectives:

**Developing** transportation projects that provide more travel options

**Promoting reinvestment** in underutilized or vacant/abandoned properties

**Supporting economic development**

Ensuring that the **benefits of growth and change are available to all** members of a community

**Enhancing regional cohesion**

Providing people with **safe and reliable transportation** choices

## Program Impact:

**127 planning grants** have been awarded since 2006

Over **\$6 million dollars** in total investment in TLCI planning projects

Over **30 implementation grants** awarded since 2016

**Between 2006-2011, 86% of transportation projects** in NOACA's service area were recommended through TLCI plans, totaling over **\$152 million dollars** in investment

Public input continues to shape the planning and implementation process



	MAY - JULY	AUGUST - OCTOBER	OCTOBER - DECEMBER	JANUARY	FEBRUARY	MARCH
ENGAGEMENT	Kickoff Meeting	Stakeholder Outreach		Commuity Meeting	Commuity Meeting	Presentation of Report for Adoption
		Community Meeting				
PLANNING PROCESS	Existing Conditions Analysis	Preliminary Studies & Scenarios		Preferred Alternatives	Drafting of Report Document	Final Recommendations & Report
		Economic / Market Study				
		Traffic Study and Analysis				



Core Team Meeting (3 to 4 total)



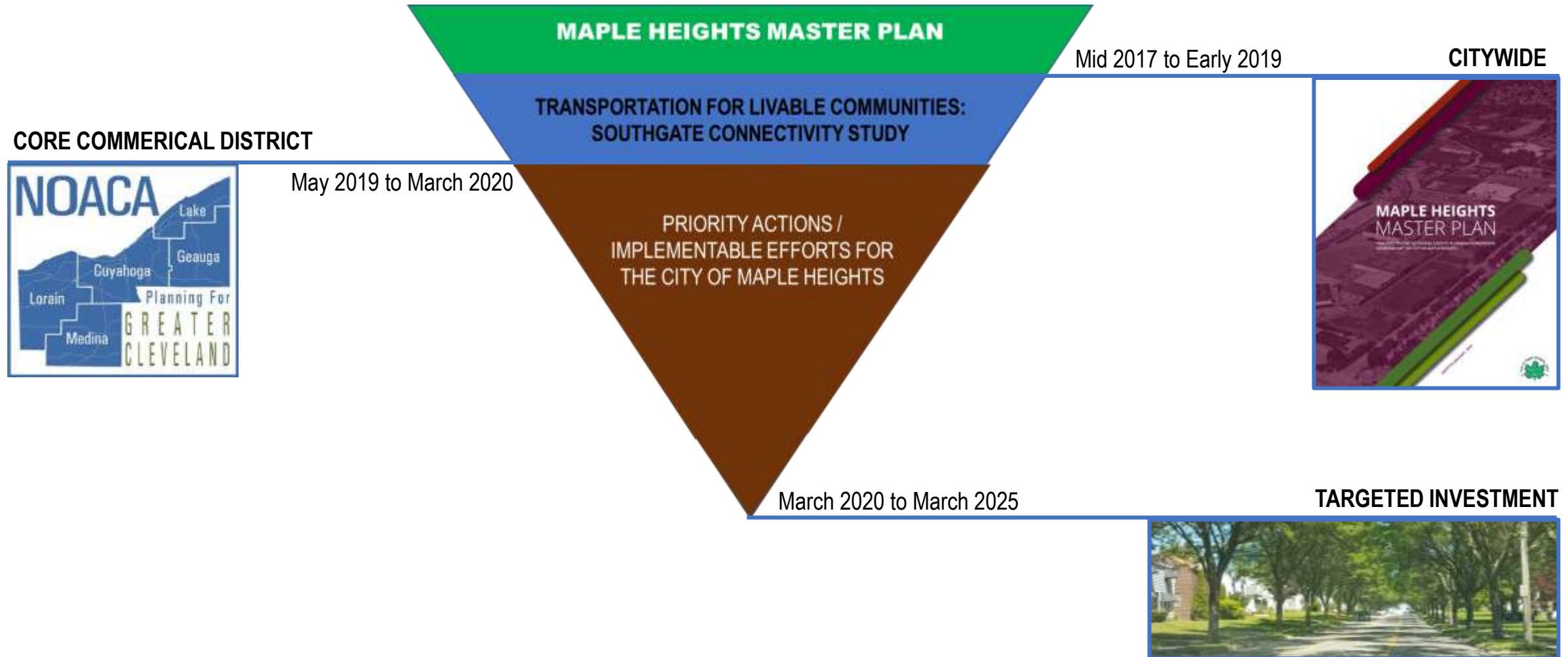
Community Meeting / Presentation (3 total sessions)

## MAPLE HEIGHTS TLCI: SOUTHGATE CONNECTIVITY STUDY

### PROJECT TIMELINE

# OVERLAYING & COORDINATING PLANNING

Various scales & initiatives





### STREETSCAPES, WAYFINDING, & PUBLIC ART

Use dots to identify priority improvements within the Southgate Commercial District

Images illustrating various street improvements: a tree, a wayfinding sign, a public art piece, a colorful mural, a crosswalk, a modern light fixture, and a public art sculpture.

### RANKING FOCUS AREAS

To help the City of Maple Heights prioritize investment, we have ranked your top 3 focus areas.

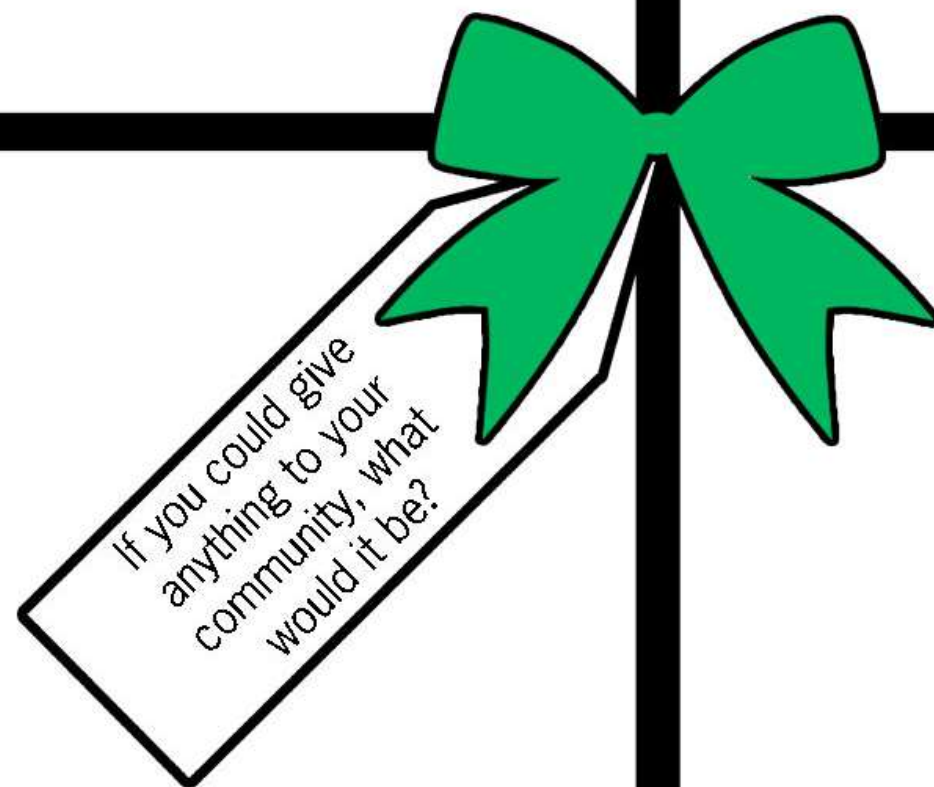
- North Gateway - Waterville Co Rd
- North Gateway - Northfield Rd
- Waterville Co Rd - Lobby Rd
- Southgate USA
- Southgate Park
- North Gateway - Waterville Co Rd

### TRANSPORTATION

Use dots to identify priority improvements within the Southgate Commercial District

Images illustrating various transportation improvements: a person on a bicycle, a car, a person on a scooter, a crosswalk, a person walking, a person on a bicycle, a person on a scooter, and a person walking.

MAPLE HEIGHTS TLCI: SOUTHGATE  
CONNECTIVITY STUDY  
GROUP ACTIVITIES



If you could give  
anything to your  
community, what  
would it be?



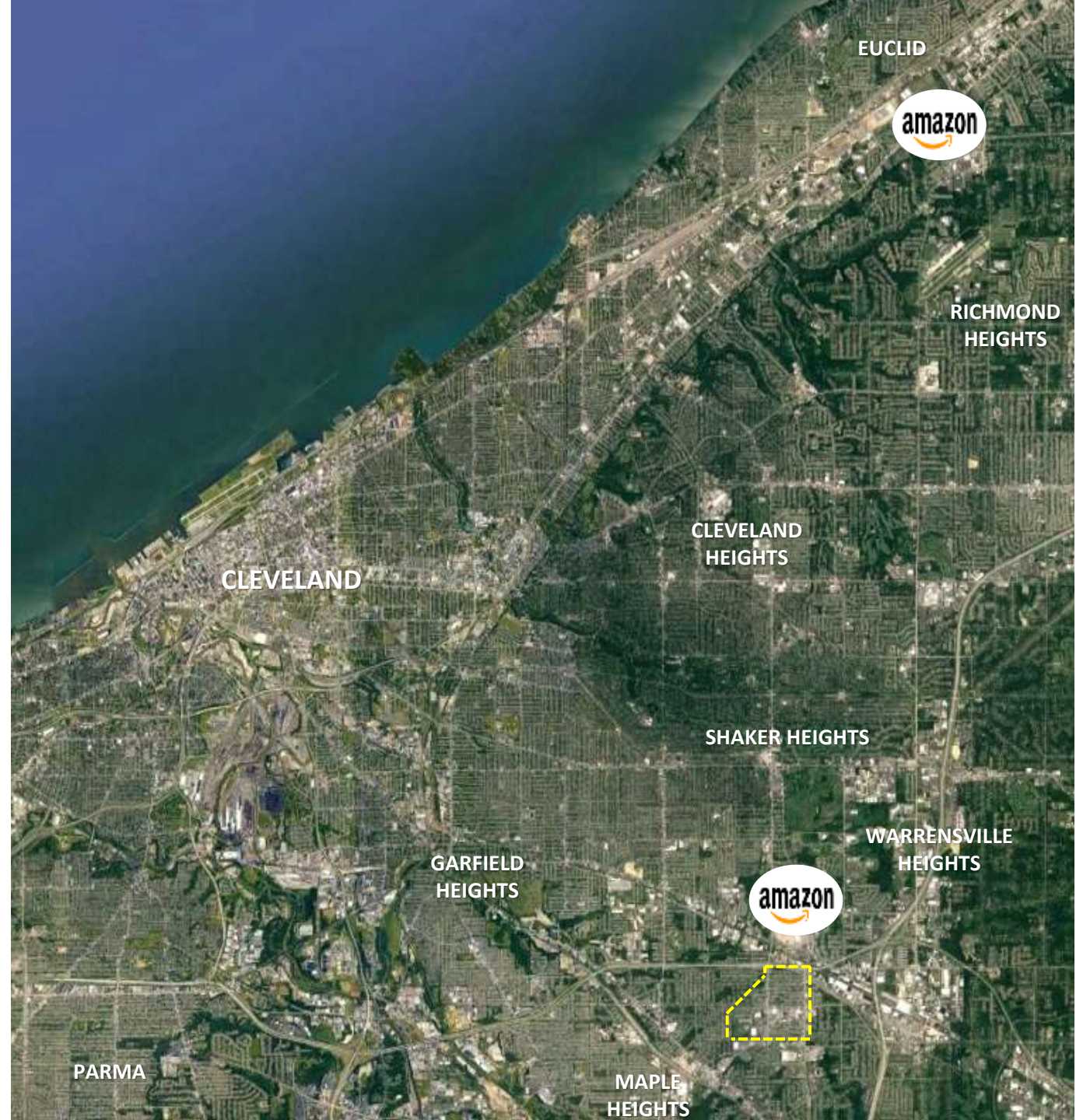


**WHAT WE'VE DONE SO FAR**



- What's next for Cleveland's Eastern Suburbs...?
- The Age of Amazon... and the fate of the traditional mall
- Anticipating change... future-proofing your community

**MAPLE HEIGHTS TLCI: SOUTHGATE  
CONNECTIVITY STUDY**  
PROJECT CONTEXT





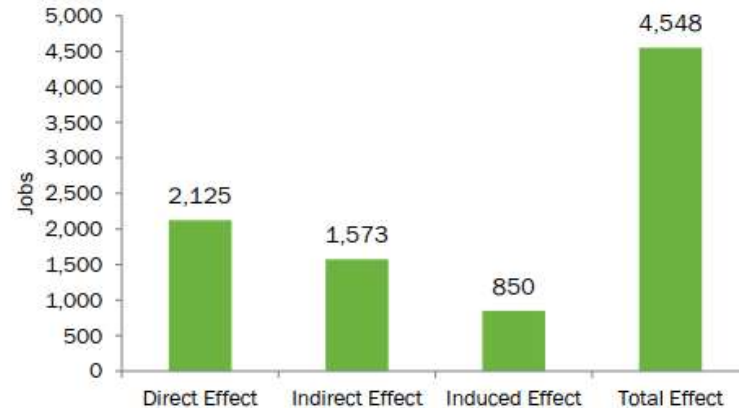
## Market Study Summary

- When Amazon jumps in your pool who gets wet?
- Opportunities for employment tied to services Amazon needs for its operations – ex. Delivery Drivers and Machinery Repair
- Accommodating for a continued increase in demand for housing for a variety of incomes
- What share of Amazon's impact can Maple Heights capture?

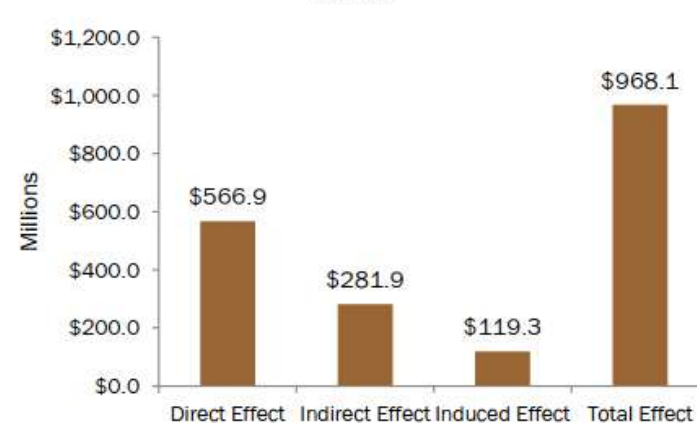
## MAPLE HEIGHTS TLCI: SOUTHGATE CONNECTIVITY STUDY MARKET STUDY

## Analysis: Annual Operations (2019)

Employment Impacts of Amazon North Randall Fulfillment Center



Output Impacts of Amazon North Randall Fulfillment Center



Direct, Indirect, and Induced Effects of Amazon North Randall Fulfillment Center

	Employment	Labor Income (Millions)	Output (Millions)
Direct Effect	2,125	\$100.6	\$566.9
Indirect Effect	1,573	\$90.7	\$281.9
Induced Effect	850	\$41.5	\$119.3
<b>Total Effect</b>	<b>4,548</b>	<b>\$232.8</b>	<b>\$968.1</b>

Top Five Industries by Indirect and Induced Employment

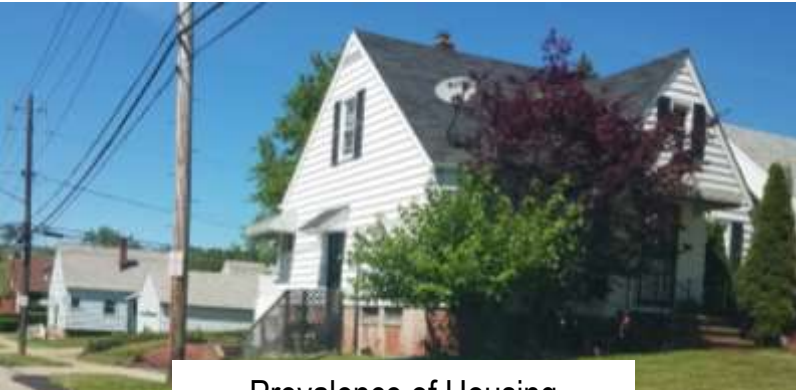
Retail - Nonstore retailers	2,138
Real estate	309
Warehousing and storage	124
Employment services	116
Wholesale trade	78

Top Five Industries by Indirect and Induced Output

Retail - Nonstore retailers	\$568,908,296
Real estate	\$81,205,210
Wholesale trade	\$18,491,889
Management of companies and enterprises	\$16,927,081
Monetary authorities and depository credit intermediation	\$13,333,347

Source: IMPLAN, 4ward Planning, 2019





Prevalence of Housing

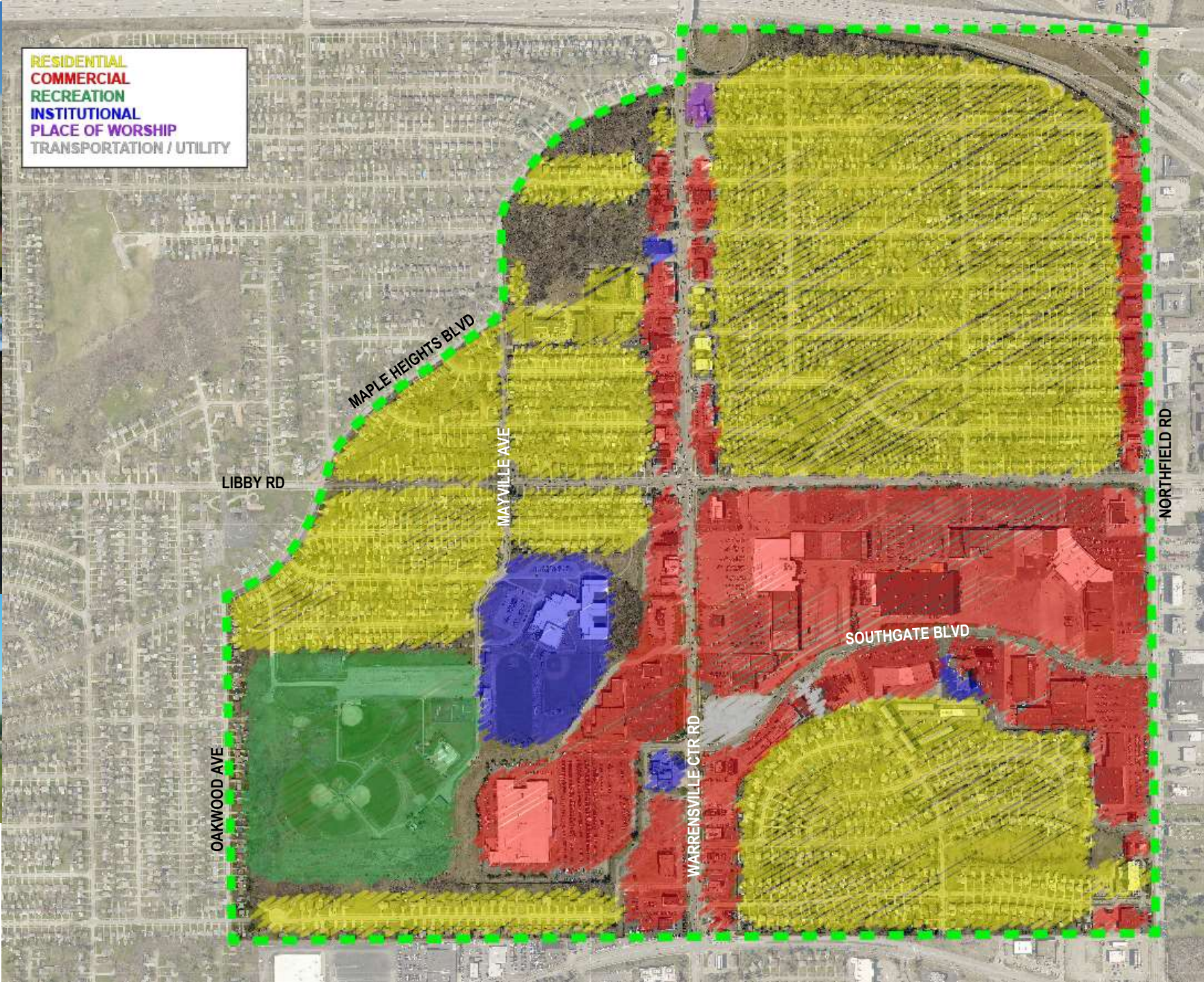


Commercial Corridor



Green/Park Space

# MAPLE HEIGHTS TLCI: SOUTHGATE CONNECTIVITY STUDY LAND USE

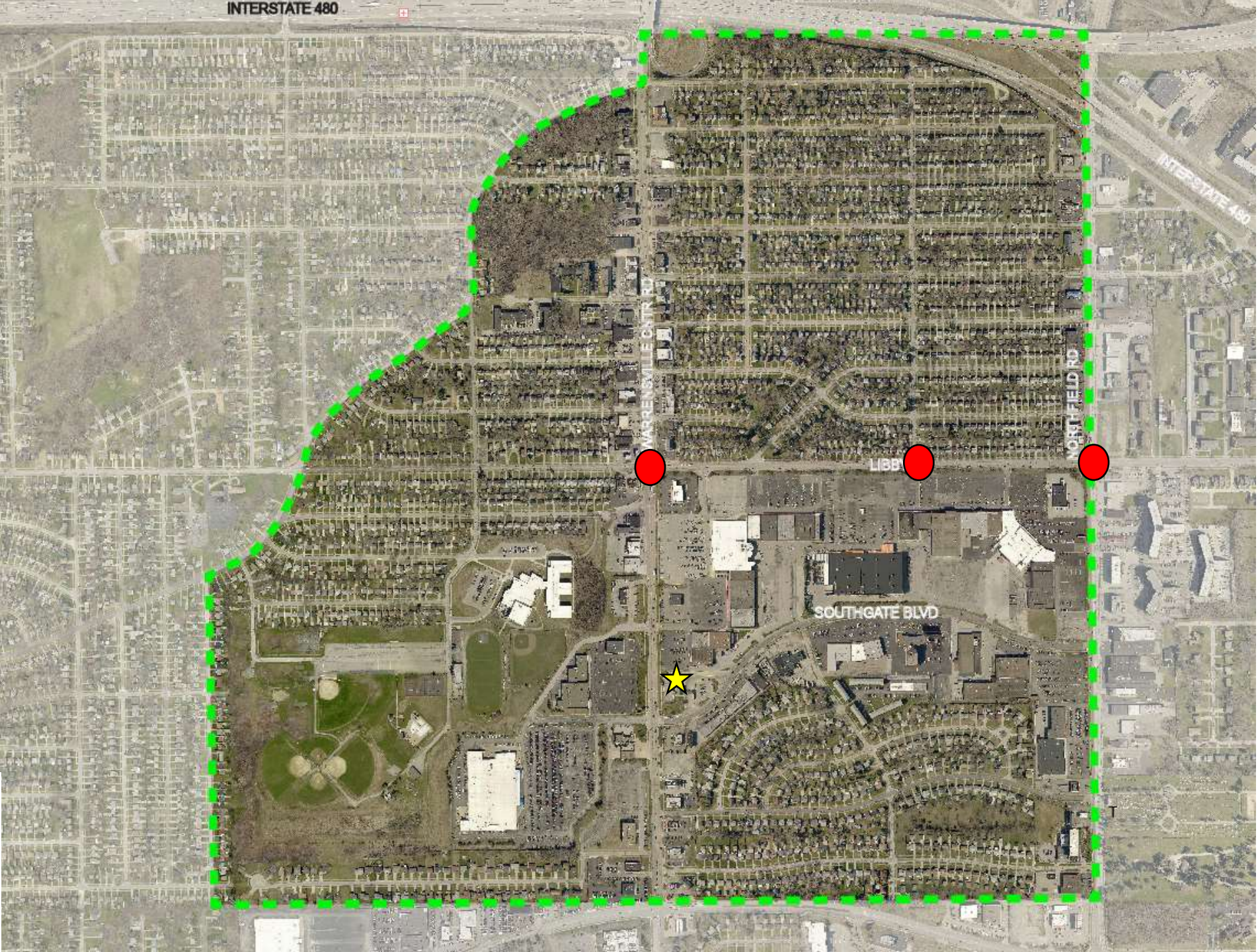




 Traffic Counts

 Southgate Transit Center (GCRTA)

**MAPLE HEIGHTS TLCI:  
SOUTHGATE CONNECTIVITY  
STUDY**  
TRAFFIC ANALYSIS

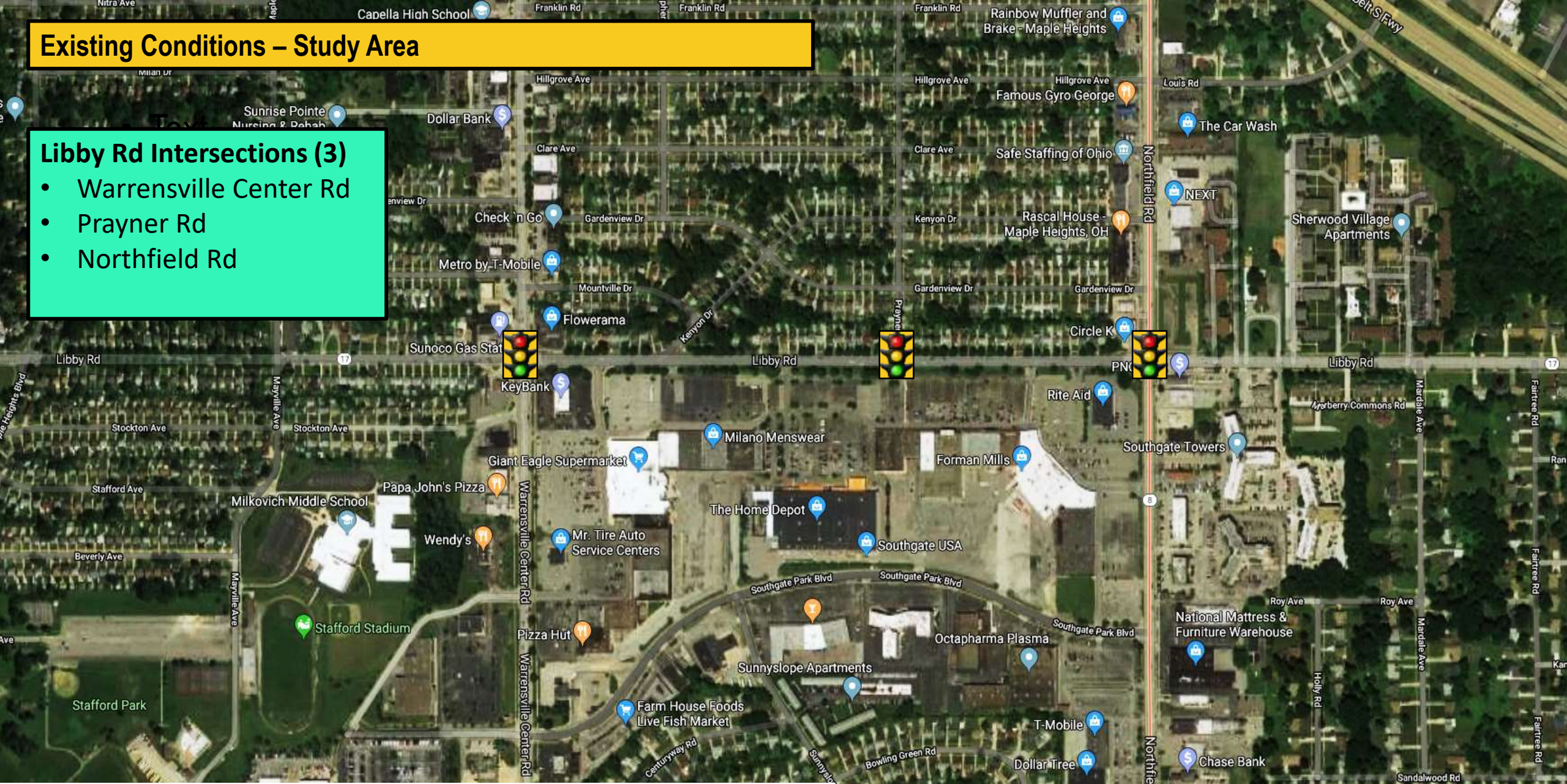




## Existing Conditions – Study Area

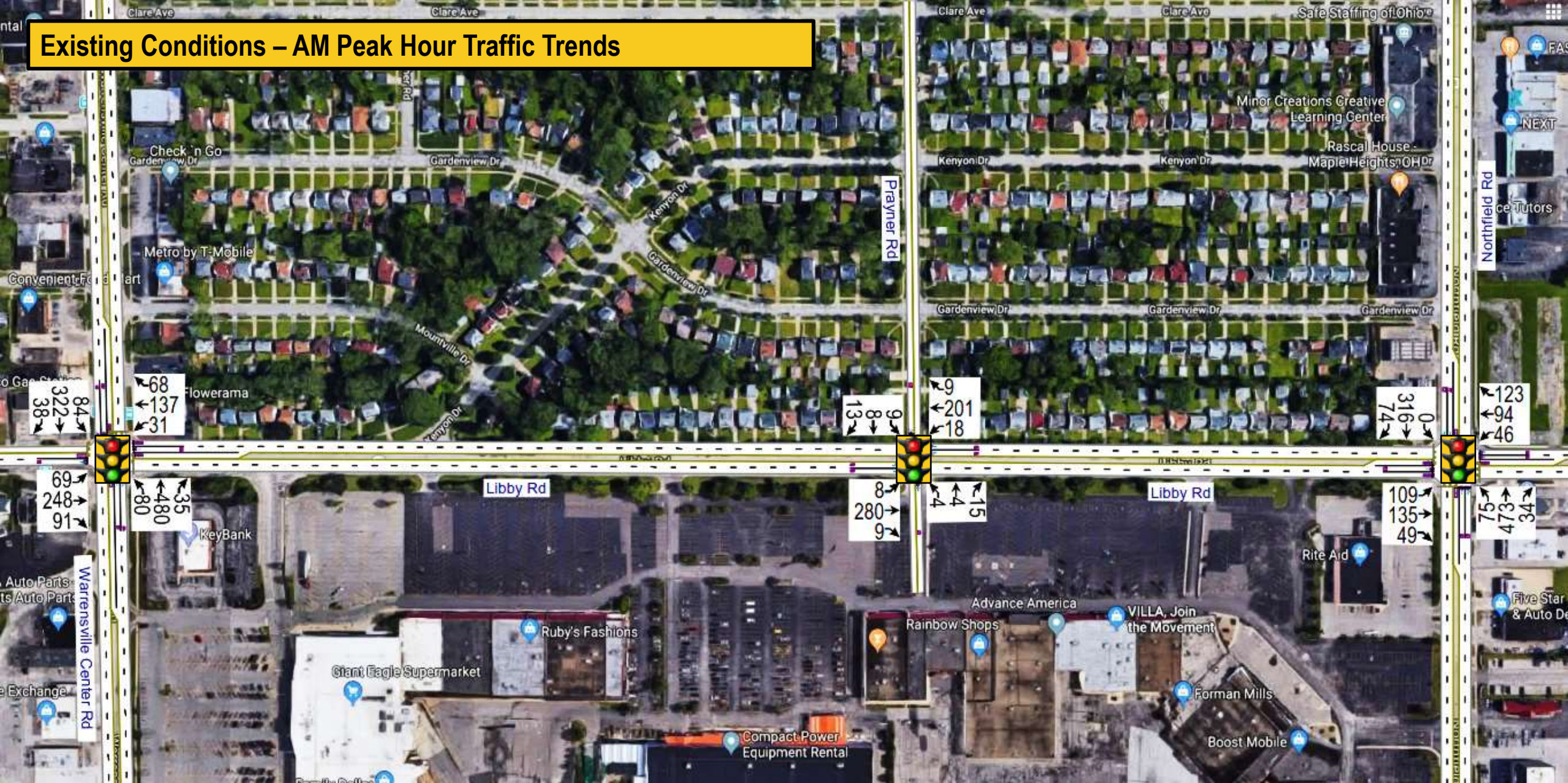
**Libby Rd Intersections (3)**

- Warrensville Center Rd
- Prayner Rd
- Northfield Rd





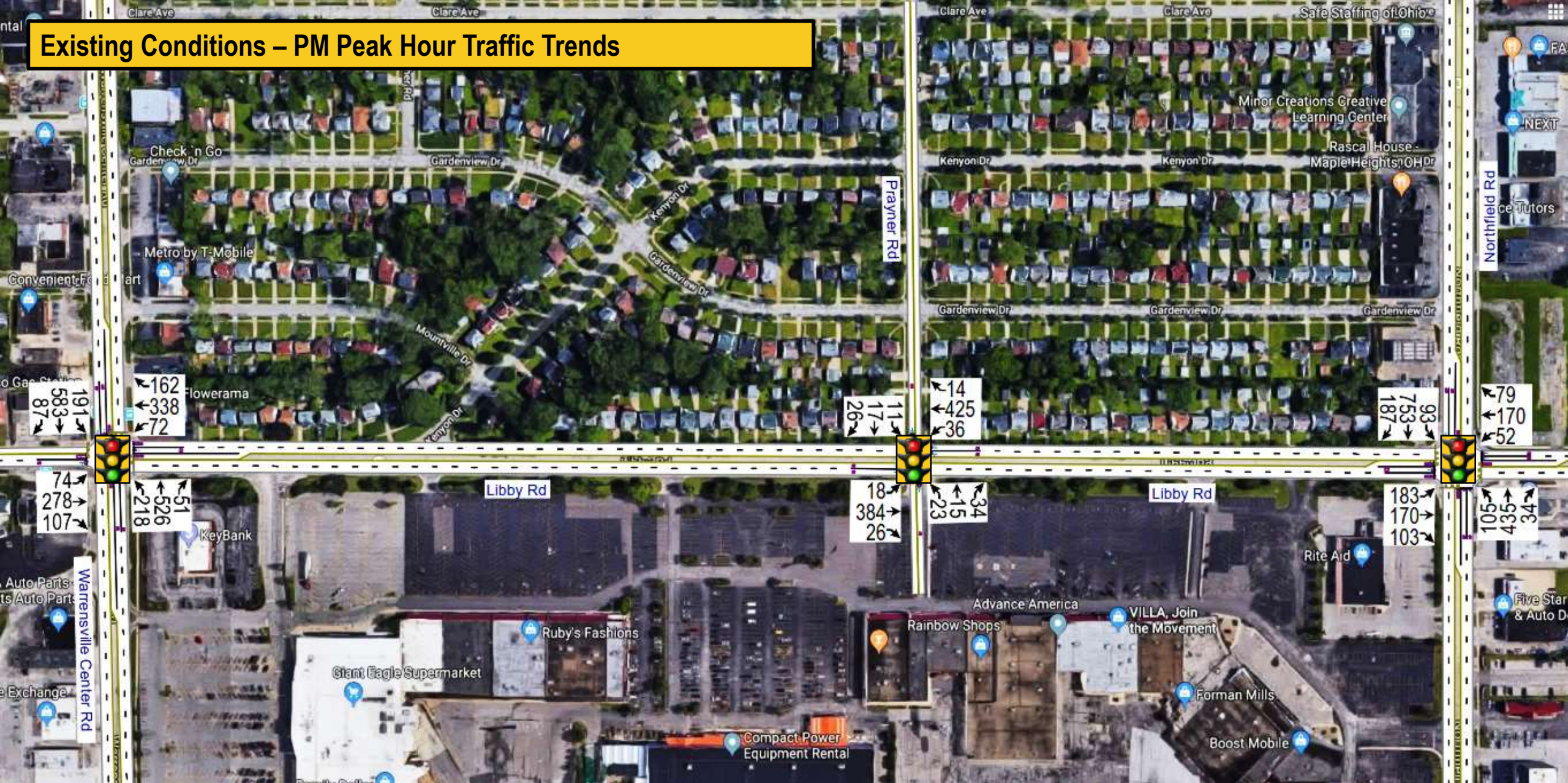
# Existing Conditions – AM Peak Hour Traffic Trends



MAPLE HEIGHTS TLCI: SOUTHGATE CONNECTIVITY STUDY  
TRAFFIC ANALYSIS



# Existing Conditions – PM Peak Hour Traffic Trends

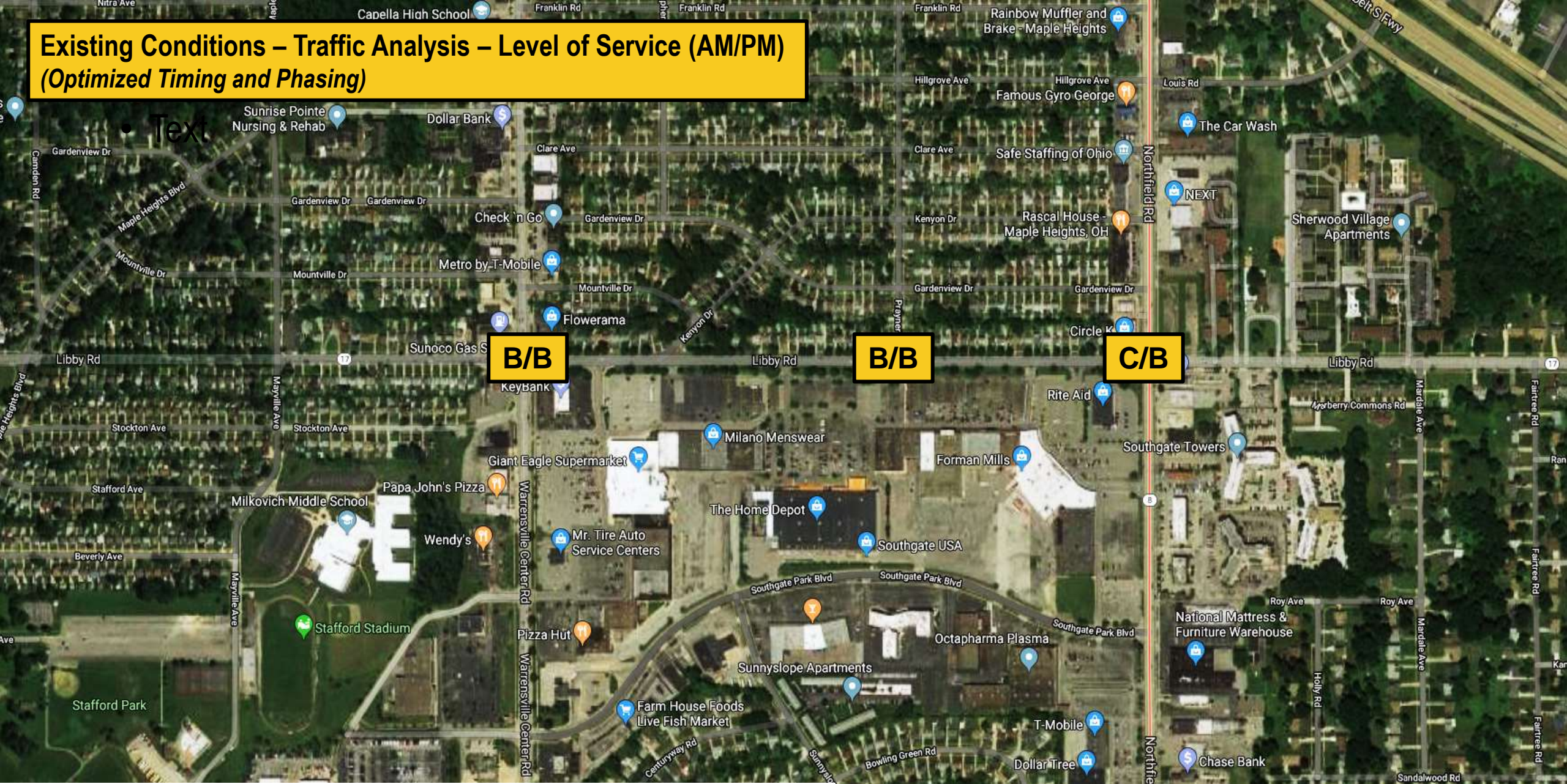


MAPLE HEIGHTS TLCI: SOUTHGATE CONNECTIVITY STUDY  
TRAFFIC ANALYSIS



**Existing Conditions – Traffic Analysis – Level of Service (AM/PM)**  
*(Optimized Timing and Phasing)*

• Text

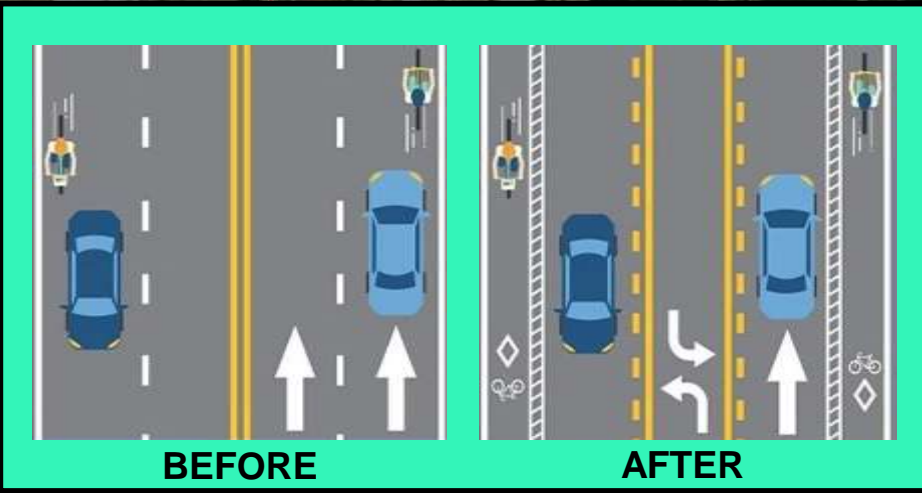
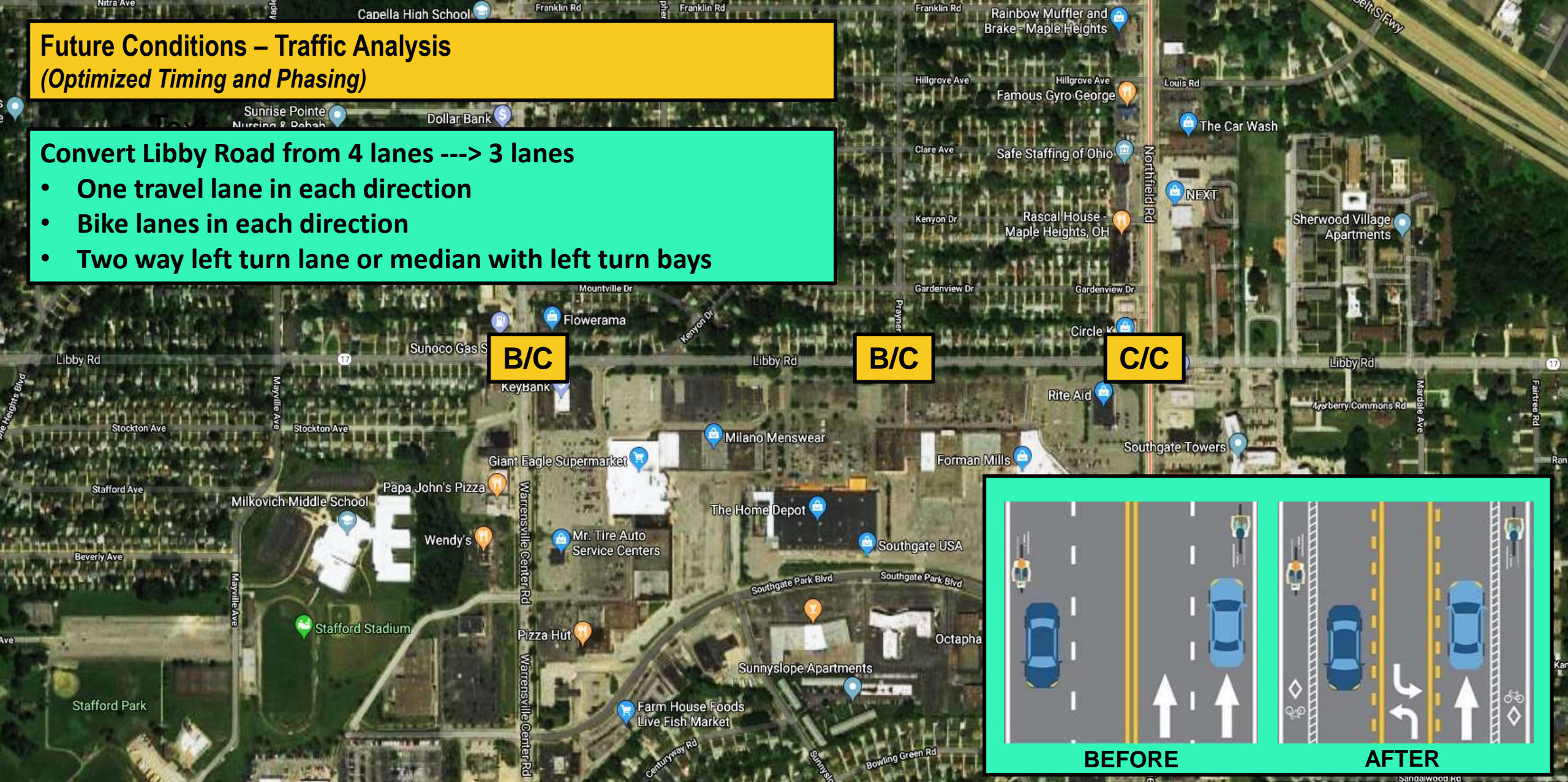




## Future Conditions – Traffic Analysis (Optimized Timing and Phasing)

Convert Libby Road from 4 lanes ---> 3 lanes

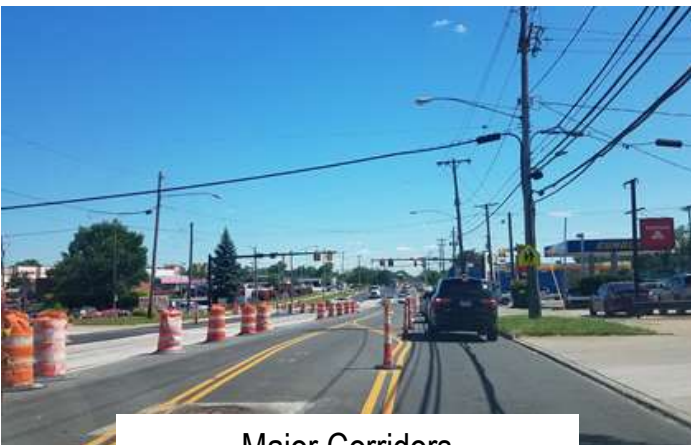
- One travel lane in each direction
- Bike lanes in each direction
- Two way left turn lane or median with left turn bays





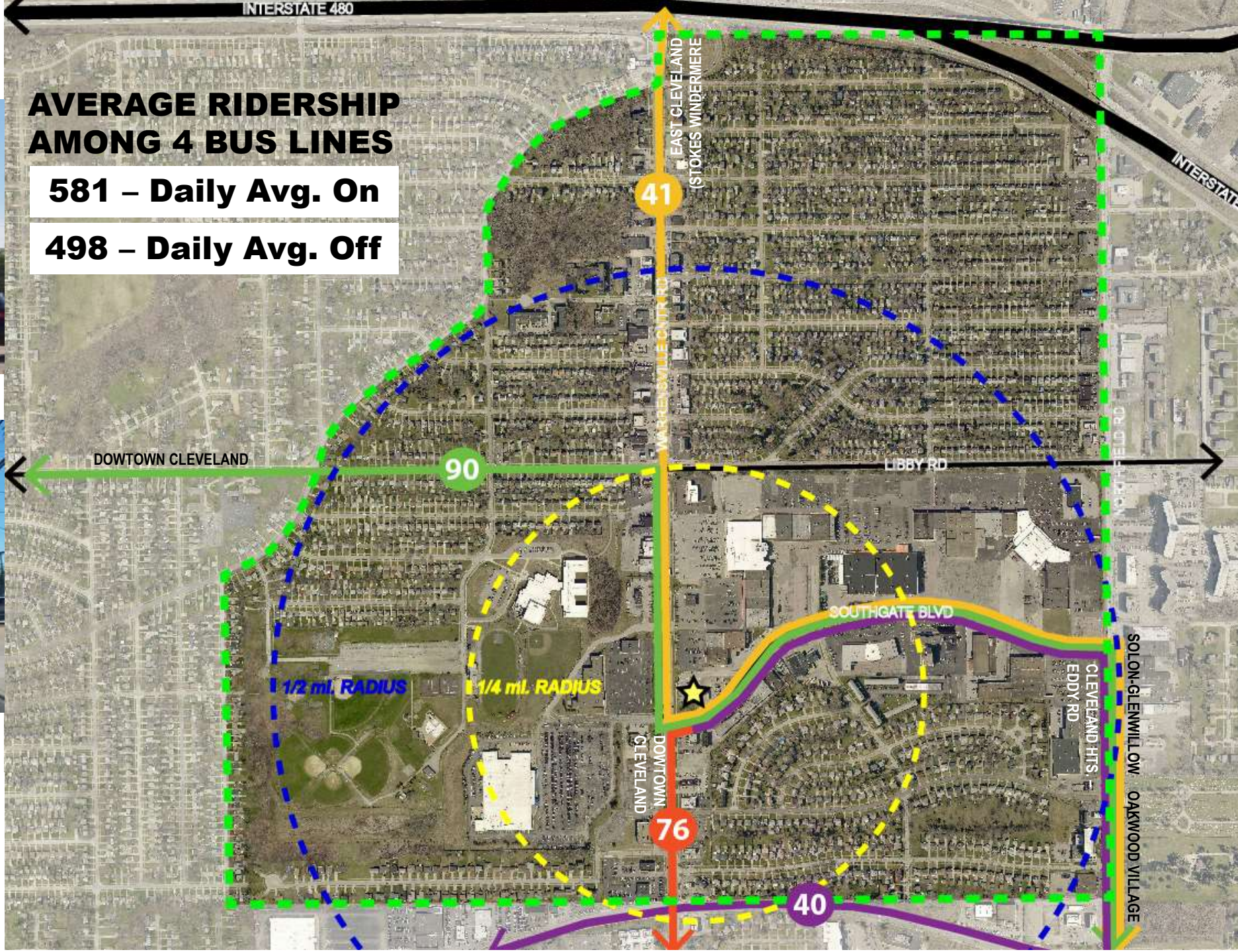


Southgate Transit Center



Major Corridors

# MAPLE HEIGHTS TLCI: SOUTHGATE CONNECTIVITY STUDY TRANSPORTATION







2. Island Effect - Southgate



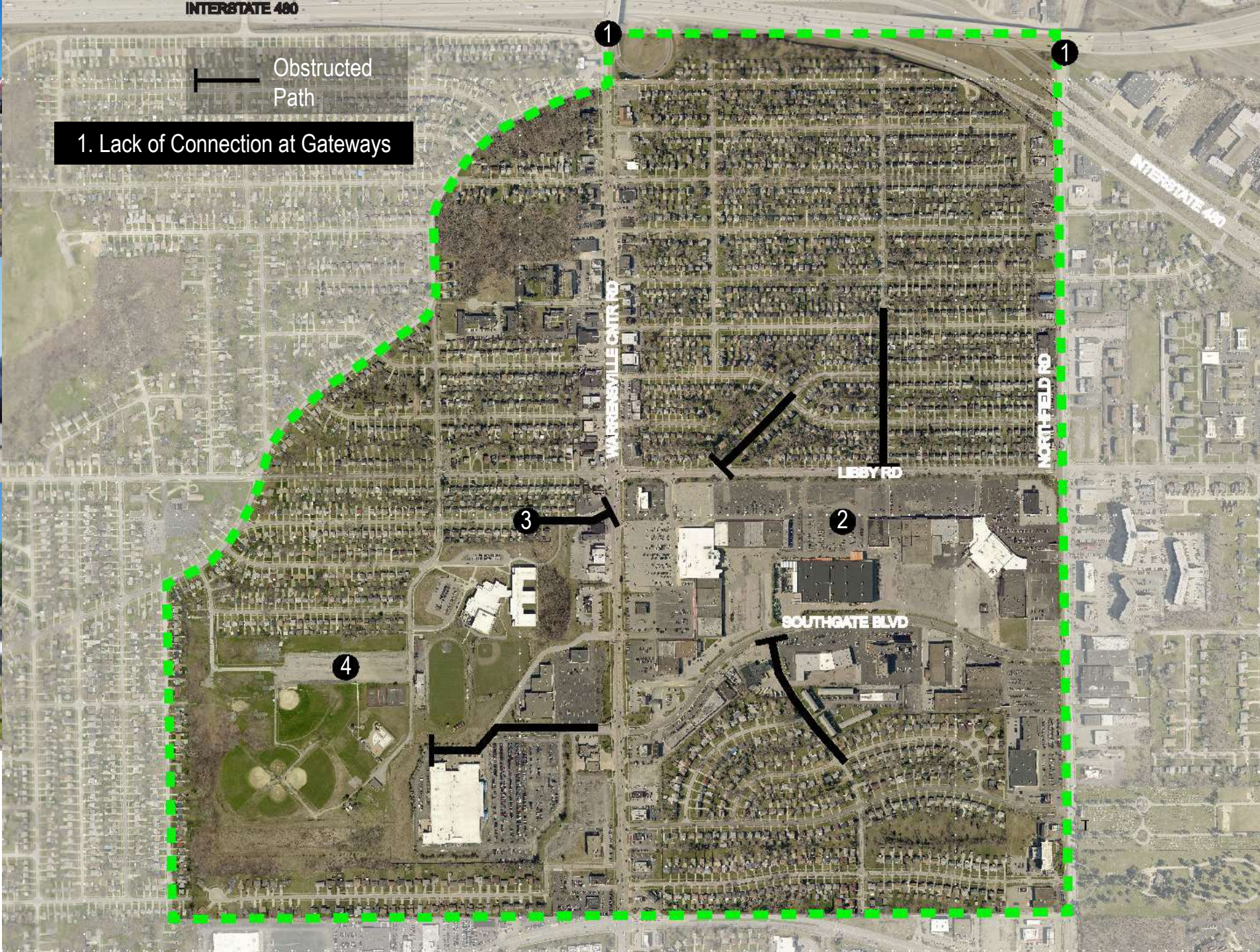
3. Path Obstructions



4. Visual Disconnect

# MAPLE HEIGHTS TLCI: SOUTHGATE CONNECTIVITY STUDY

MISSING CONNECTION





**OVER 5,500  
PARKING SPACES**

**ROUGHLY 80  
ACRES OF SURFACE  
ARE DESIGNED FOR  
PARKING BETWEEN  
LIBBY & ROCKSIDE**

**MAPLE HEIGHTS TLCI:  
SOUTHGATE CONNECTIVITY  
STUDY  
PARKING STUDY**





## ***WHAT WE'VE HEARD SO FAR***

### **ACTIVE**

**A more functional Stafford Park**

**Recreation Center**

**Outdoor Theater**

**Need for Bike Infrastructure (protected bike lanes)**

### **CONNECT**

**Safer Pedestrian paths within Commercial District**

**Improved crosswalks**

**Wayfinding signage**

### **LOCAL**

**Improved paths to Employment / Self Sufficiency**

**Support/Funding for Local Businesses**

**Diversity of Housing Options**

**Becoming a Model for Sustainable Communities**

### **IDENTITY**

**Celebrating Community Culture & Heritage**

**Creating a Destination**

**Connecting with Youth**



## Implementation

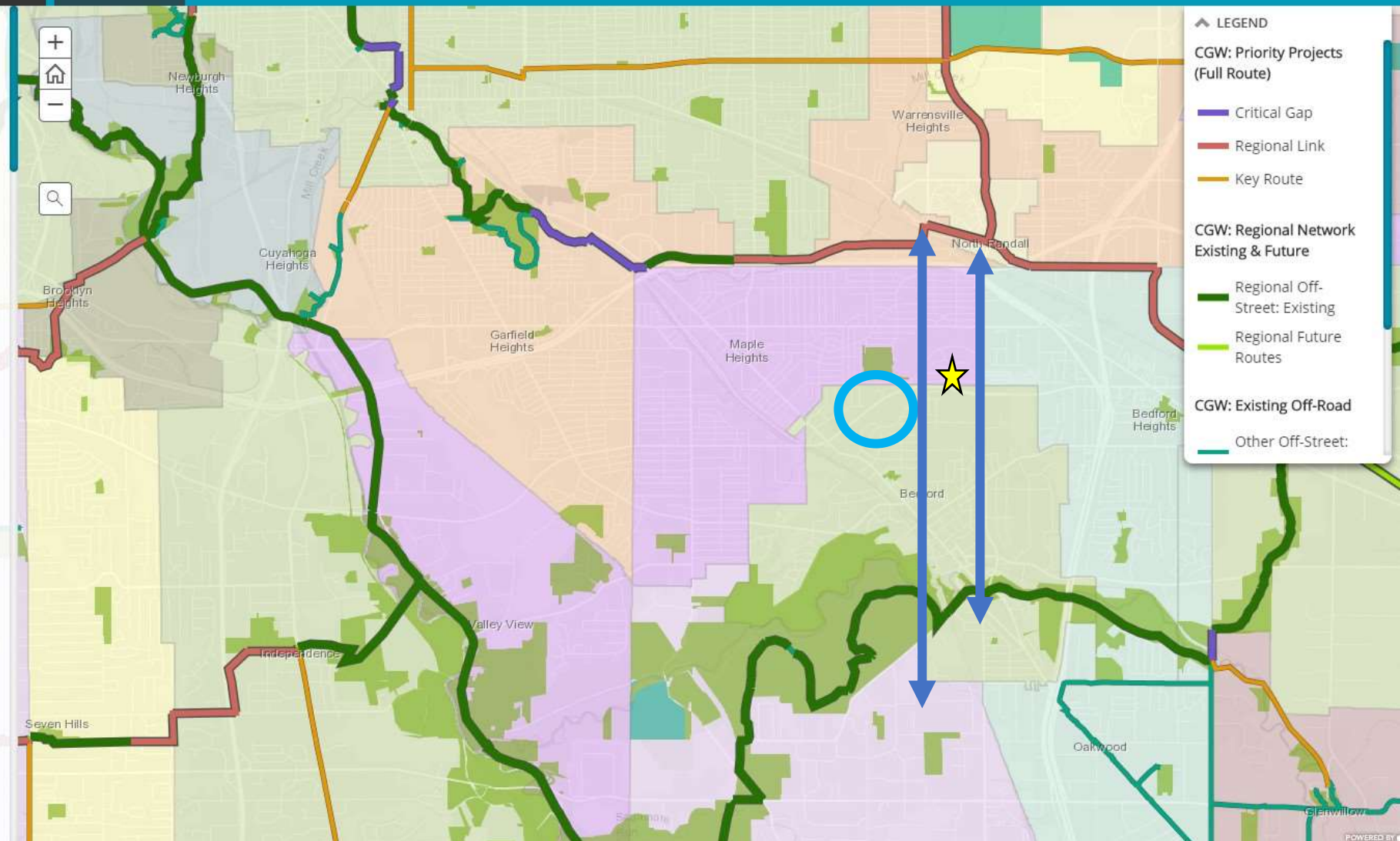
Implementing the Cuyahoga Greenway framework will require coordinating and a long-term commitment. The full framework identifies over 820-miles of greenways and urban trails, 635-miles of which are not yet realized.

The value of having this framework plan is that regional and local governments, agencies, non-profit groups, and other organizations can have a shared blueprint for building routes that compliment one another and grows the overall network. New trails and non-motorized facilities can have the biggest impact when they increase access to and better with existing infrastructure.



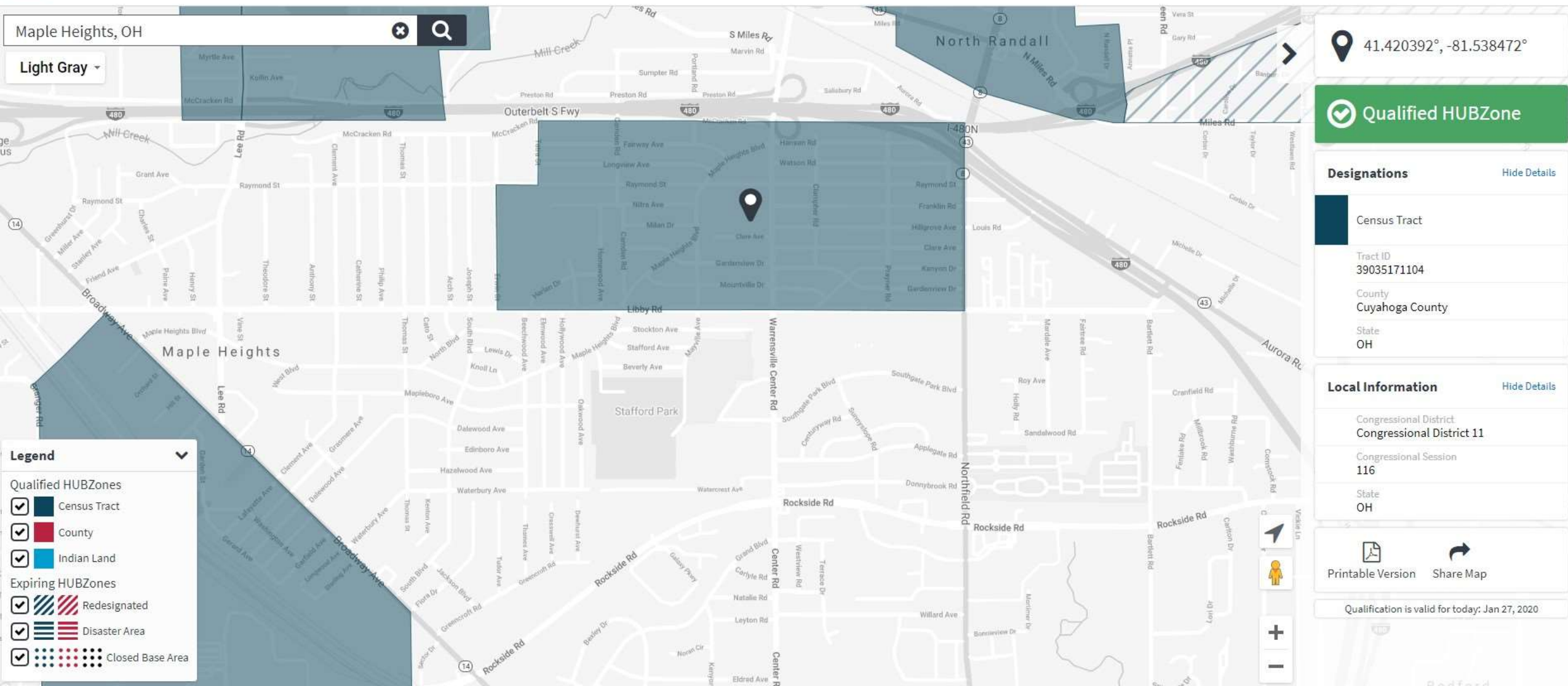
### For a BIG, Positive Impact

Building out just the proposed regional trail system will have a big impact on County residents' access to trails. Today, only 280,000 residents are within a mile of a regional trail system, where over 500,000 can be within a mile in the future. That is over 40% of the county population within a mile of just the regional network.



# MAPLE HEIGHTS TLCI: SOUTHGATE CONNECTIVITY STUDY COMMUNITY INPUT





# MAPLE HEIGHTS TLCI: SOUTHGATE CONNECTIVITY STUDY COMMUNITY INPUT





**Assets & Anchors**

**PARKING...**

**What if you don't drive?**

**Transit Center**

**Recent Investment**

**Strengthen Connections**

**Welcome!**

**TAKEAWAYS / THOUGHTS**



# ar·rive

/əˈrɪv/

*verb*

reach a place at the end of a journey or stage in a journey

# move·ment

/ˈmʊvmənt/

*noun*

1. an act of changing physical location or position or of having this changed.

2. a change or development

# i·den·ti·ty

/ˌɪden(t)ədē/

*noun*

1. the fact of being who or what a person or thing is

2. a close similarity or affinity



- 1

Warrensville Ctr Rd & I-480
- 2

Northfield Rd & I-480
- 3

Libby Rd & Mayville Ave
- 4

Warrensville Ctr Rd & Libby Rd
- 5

Kenyon Dr & Libby Rd
- 6

Prayner Rd & Libby Rd
- 7

Northfield Rd & Libby Rd
- 8

Warrensville Ctr Rd & Wendy's Intersection
- 9

Warrensville Ctr Rd & Southgate Blvd
- 10

Sunnyslope Rd & Southgate Blvd
- 11

Northfield Rd & Southgate Blvd
- 12

Warrensville Ctr Rd & Rockside Rd
- 13

Northfield Rd & Rockside Rd
- A

Warrensville Ctr Rd
- B

Libby Rd
- C

Southgate Blvd
- 1

Warrensville Rd Community Baptist Church
- 2

Milkovich Middle School
- 3

Southgate USA
- 4

Southgate Transit Center
- 5

Stafford Park
- 6

Ford Dealership
- 7

'New' KFC
- 8

'New' Checkers/Rally's Intersection
- 9

Rid-All Green Partnership
- 1

Kenyon Dr
- 2

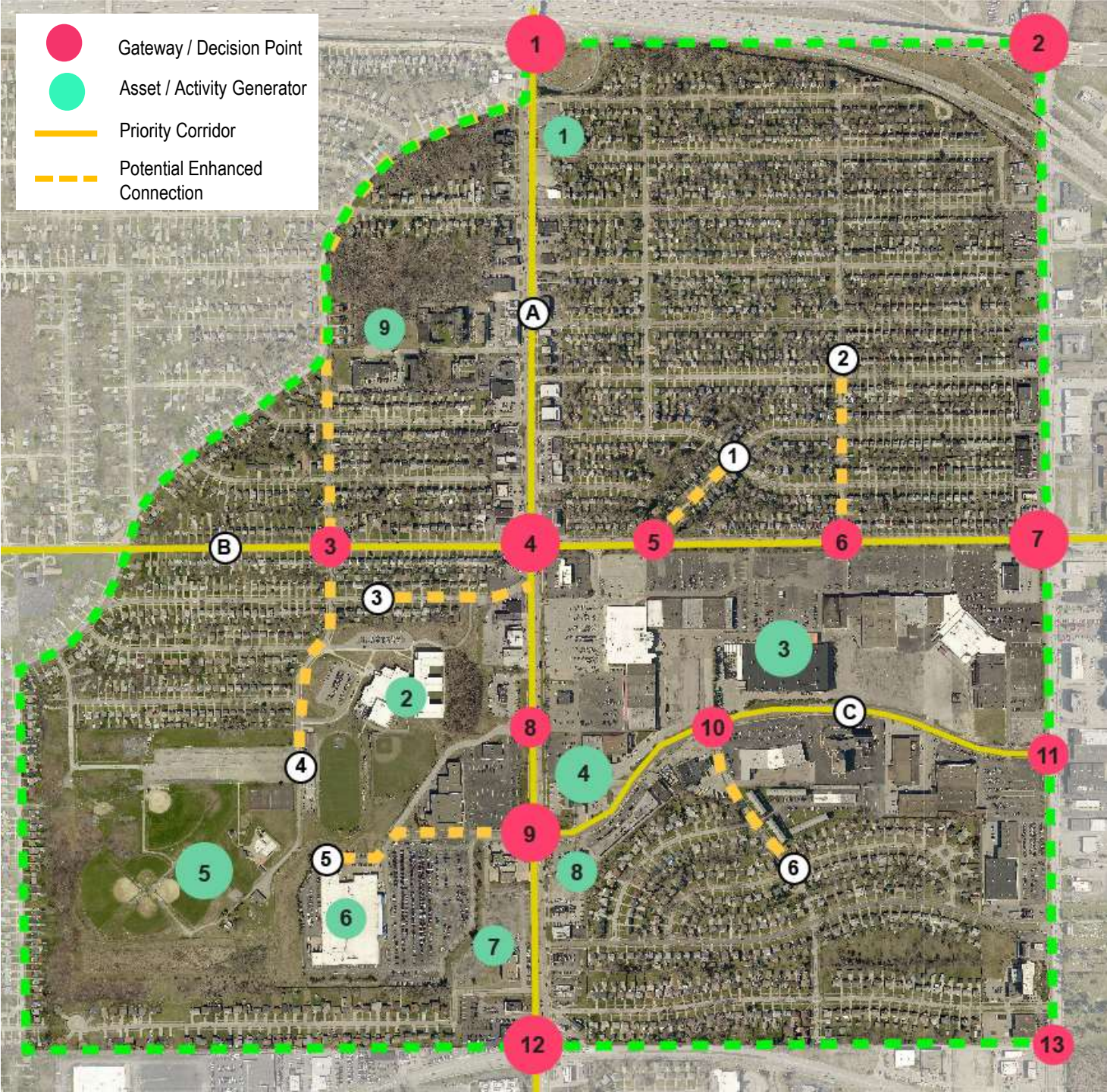
Prayner Rd
- 3

Stockton Ave
- 4

Mayville Ave
- 5

Southgate Blvd to Ford
- 6

Sunnyslope Rd



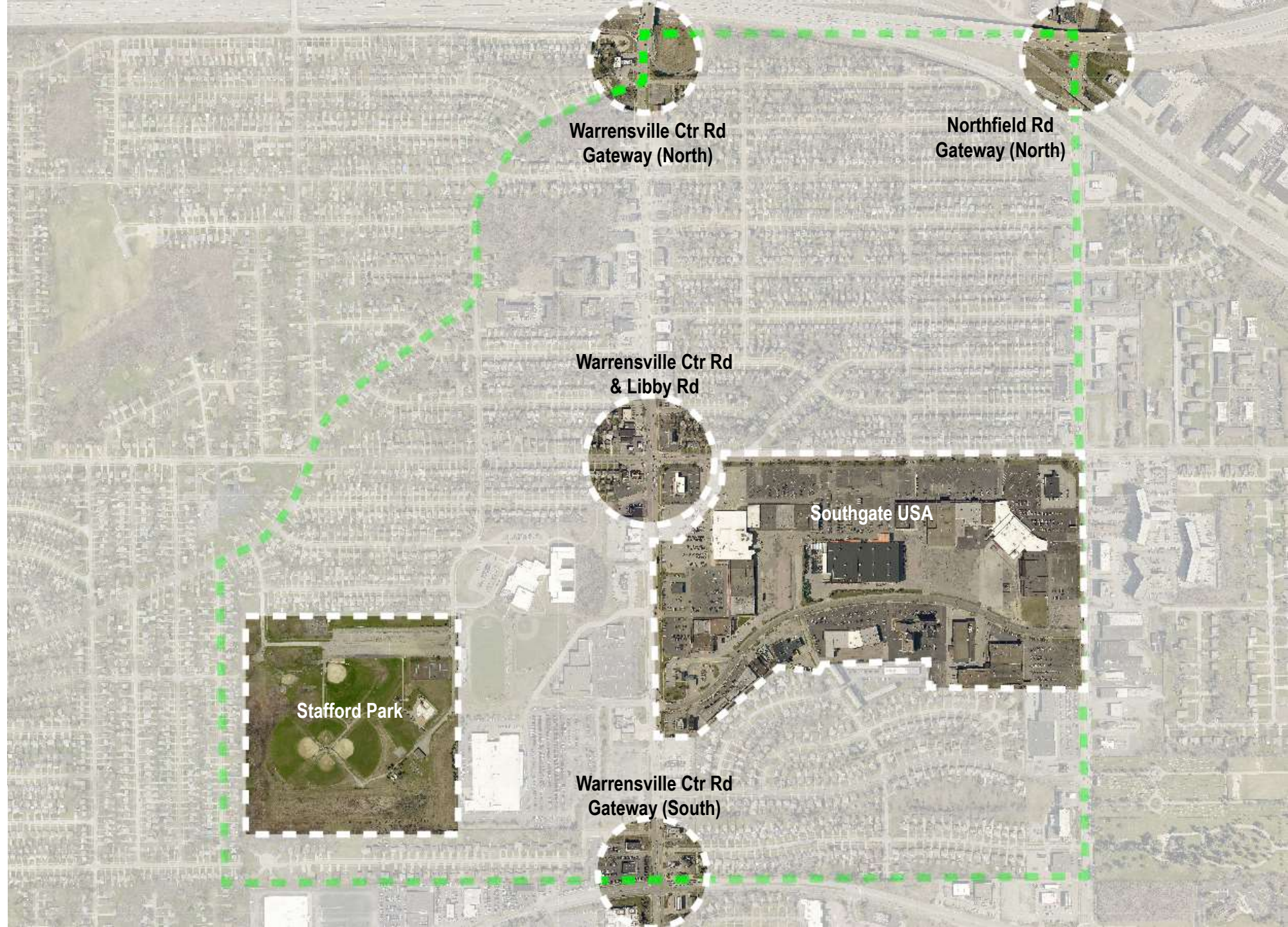
MAPLE HEIGHTS TLCI: SOUTHGATE

CONNECTIVITY STUDY

WHAT WE'VE LEARNED



**MAPLE HEIGHTS TLCI:  
SOUTHGATE  
CONNECTIVITY STUDY  
FOCUSING IN**







SOUTHGATE USA



SOUTHGATE USA PARKING LOT





# SOFTENING THE EDGE OF THE PARKING AREAS

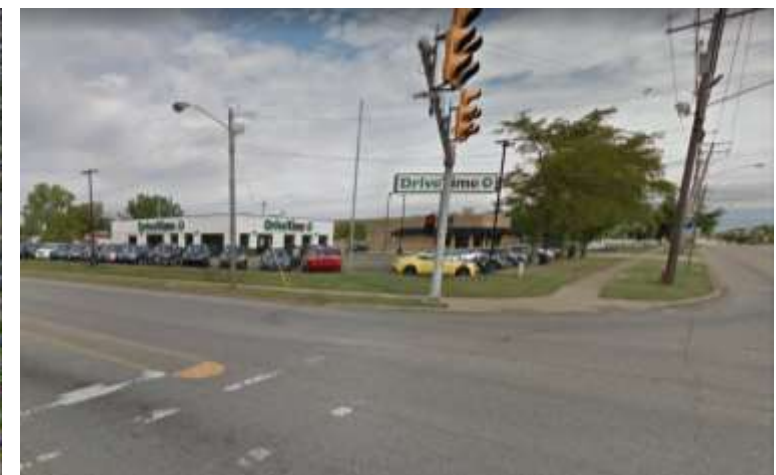






**SAFELY INCORPORATING  
DEDICATE BIKE PATHS**



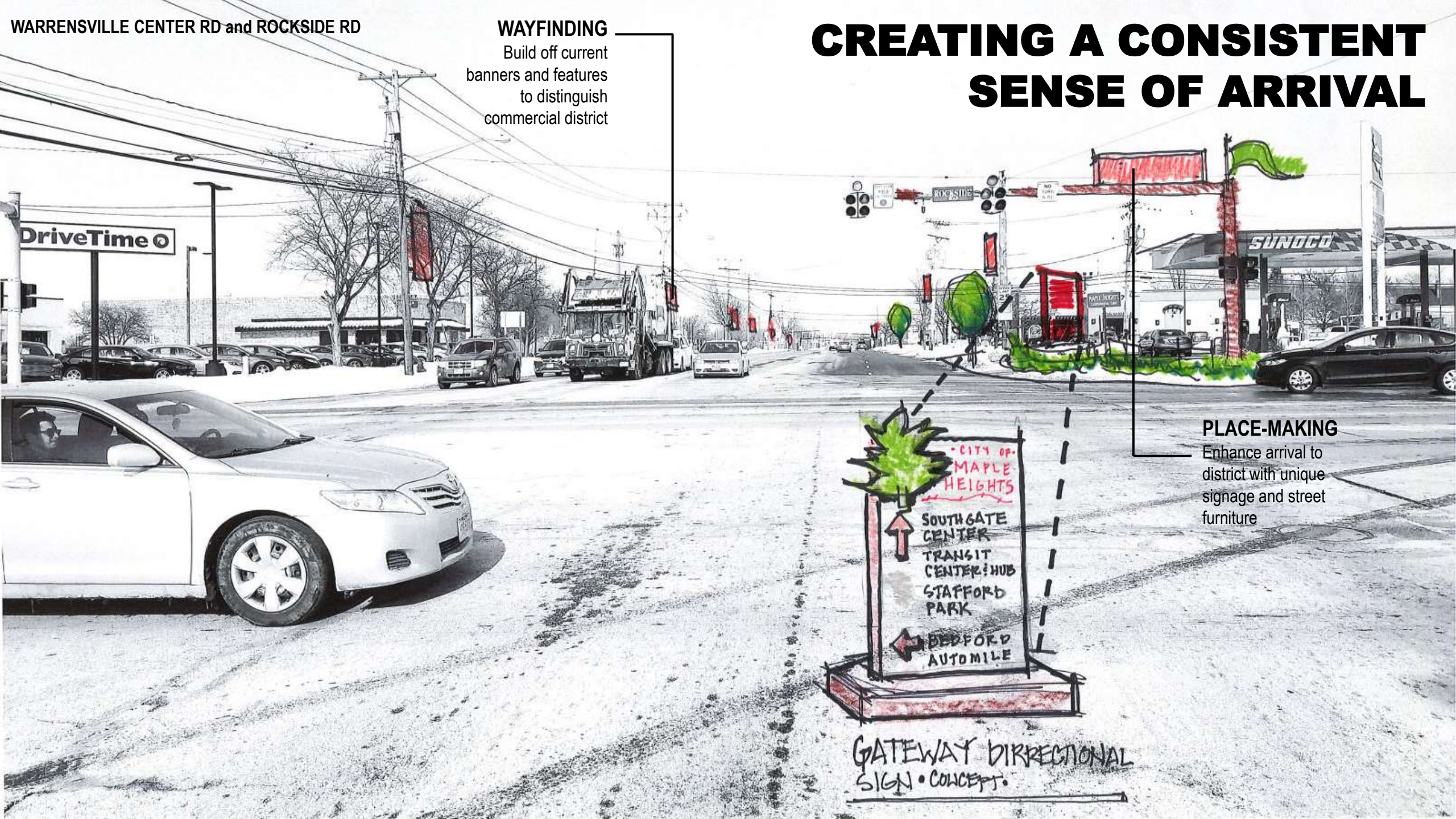


**WARRENSVILLE CENTER RD –  
ROCKSIDE RD SOUTH GATEWAY**









WARRENSVILLE CENTER RD and ROCKSIDE RD

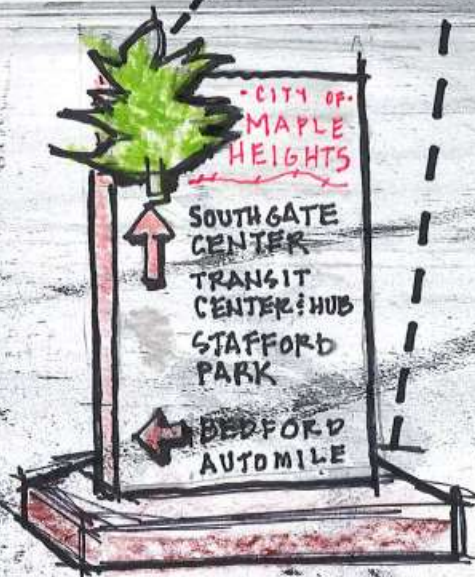
## WAYFINDING

Build off current banners and features to distinguish commercial district

# CREATING A CONSISTENT SENSE OF ARRIVAL

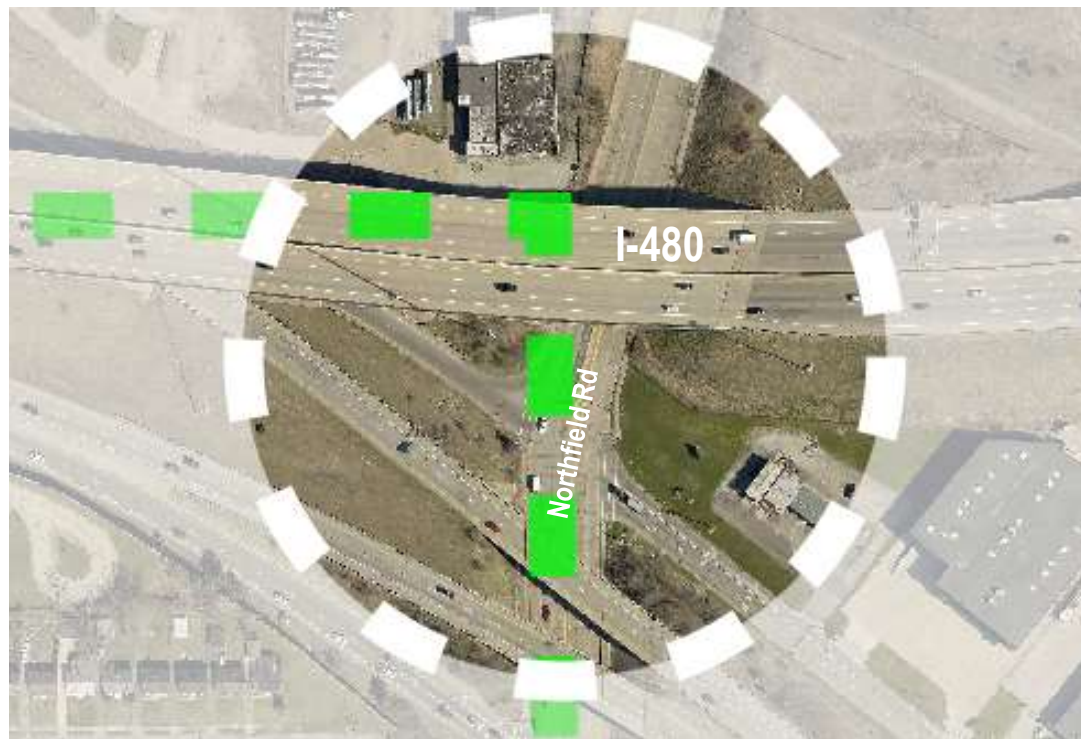
## PLACE-MAKING

Enhance arrival to district with unique signage and street furniture



GATEWAY BIRRECTIONAL SIGN • CONCEPT.





NORTHFIELD RD - NORTH  
GATEWAY





NORTHFIELD RD and INTERSTATE 480



# CREATING A CONSISTENT SENSE OF ARRIVAL

## STREET TREES

Continue rhythm of trees to create a fullness within corridor

## WAYFINDING

Build off current banners and features to distinguish commercial district

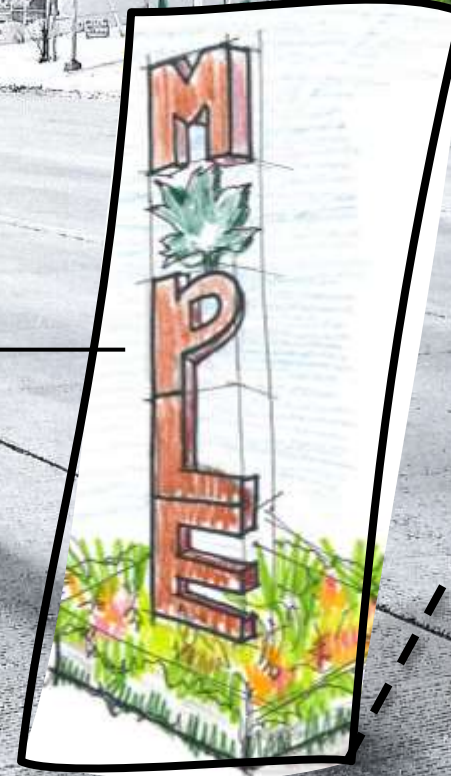
## PLACE-MAKING

Enhance arrival to district with unique signage and street furniture

## VERTICAL GATEWAY ELEMENT

Improved arrival experience coupled with landscaped enhancements

NORTHFIELD RD and INTERSTATE 480







**WARRENSVILLE CENTER RD -  
NORTH GATEWAY**





WARRENSVILLE CENTER RD and MAPLE HEIGHTS BLVD



# CREATING A CONSISTENT SENSE OF ARRIVAL

## WAYFINDING

Build off current banners and features to distinguish commercial district

MULTI-MODAL  
CONNECTION TO  
STAFFORD PARK VIA  
MAPLE HTS BLVD

## STREETSCAPE

Break up expansive roadway with median and dedicated pedestrian crosswalk

## GATEWAY ELEMENT

Improved arrival experience coupled with landscaped enhancements



WARRENSVILLE CENTER RD and MAPLE HEIGHTS BLVD









STAFFORD PARK







# REDUCING EXCESSIVE IMPERVIOUS SURFACES





# ACTIVATING UN / UNDER – UTILIZED SPACE

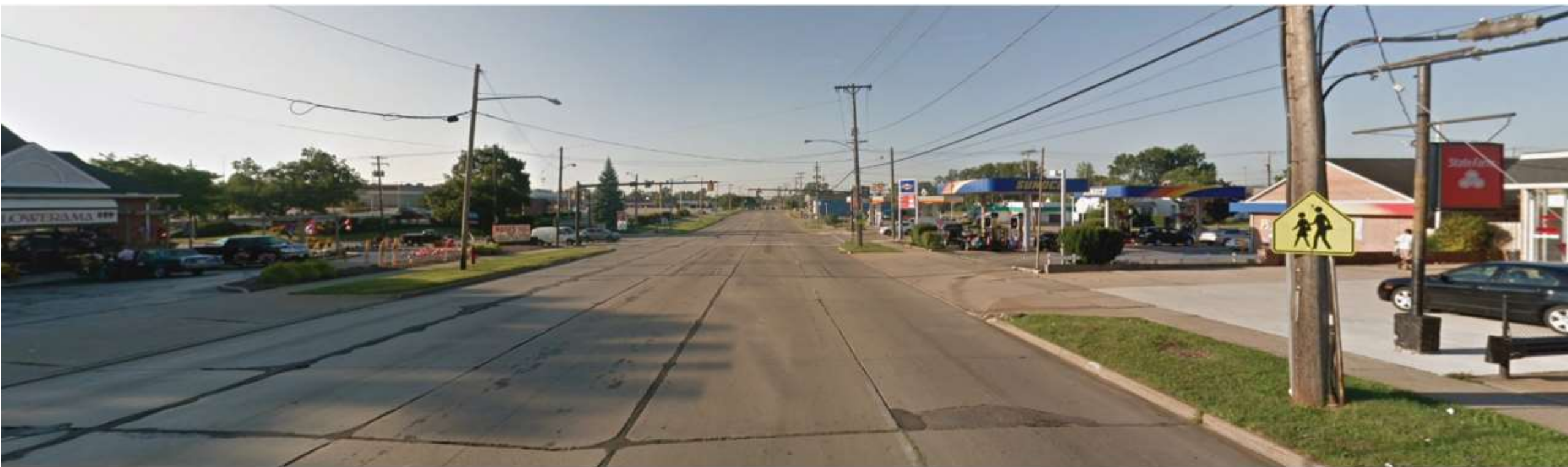






**WARRENSVILLE CENTER RD &  
LIBBY RD**





WARRENSVILLE CENTER RD looking South to LIBBY RD



# IMPROVED PEDESTRIAN EXPERIENCE

## STREET TREES

Continue rhythm of trees to create a fullness within corridor

## PLACE-MAKING

Enhance arrival to district with unique signage and street furniture



## TREE LAWN

Potential to leverage florist to enhance tree lawn aesthetic

## STREET TREES

Continue rhythm of trees to create a fullness within corridor

## ORNAMENTAL FENCE

Allow for more of a protective path for pedestrians





WARRENSVILLE CENTER RD and LIBBY RD



## WAYFINDING

Build off current banners and features to distinguish commercial district

## CENTER ENTRY

Improved pedestrian experience to Giant Eagle entry

## STREETSCAPE

Break up expansive roadway with median and dedicated pedestrian crosswalk

## PLACE-MAKING

Enhance arrival to district with unique signage and street furniture

## CROSSWALK

Clearly distinguished crossing that enhances intersection quality

## TREE LAWN

Improve and maintain green buffer along gas station

# CREATING A CONSISTENT SENSE OF ARRIVAL





WARRENSVILLE CENTER RD and STOCKTON AVE



## MURAL

Place-making  
feature

## DECORATIVE FENCE

Creation of a nice buffer for parking

## WAYFINDING

Enhance connection  
with school

## CROSSWALK

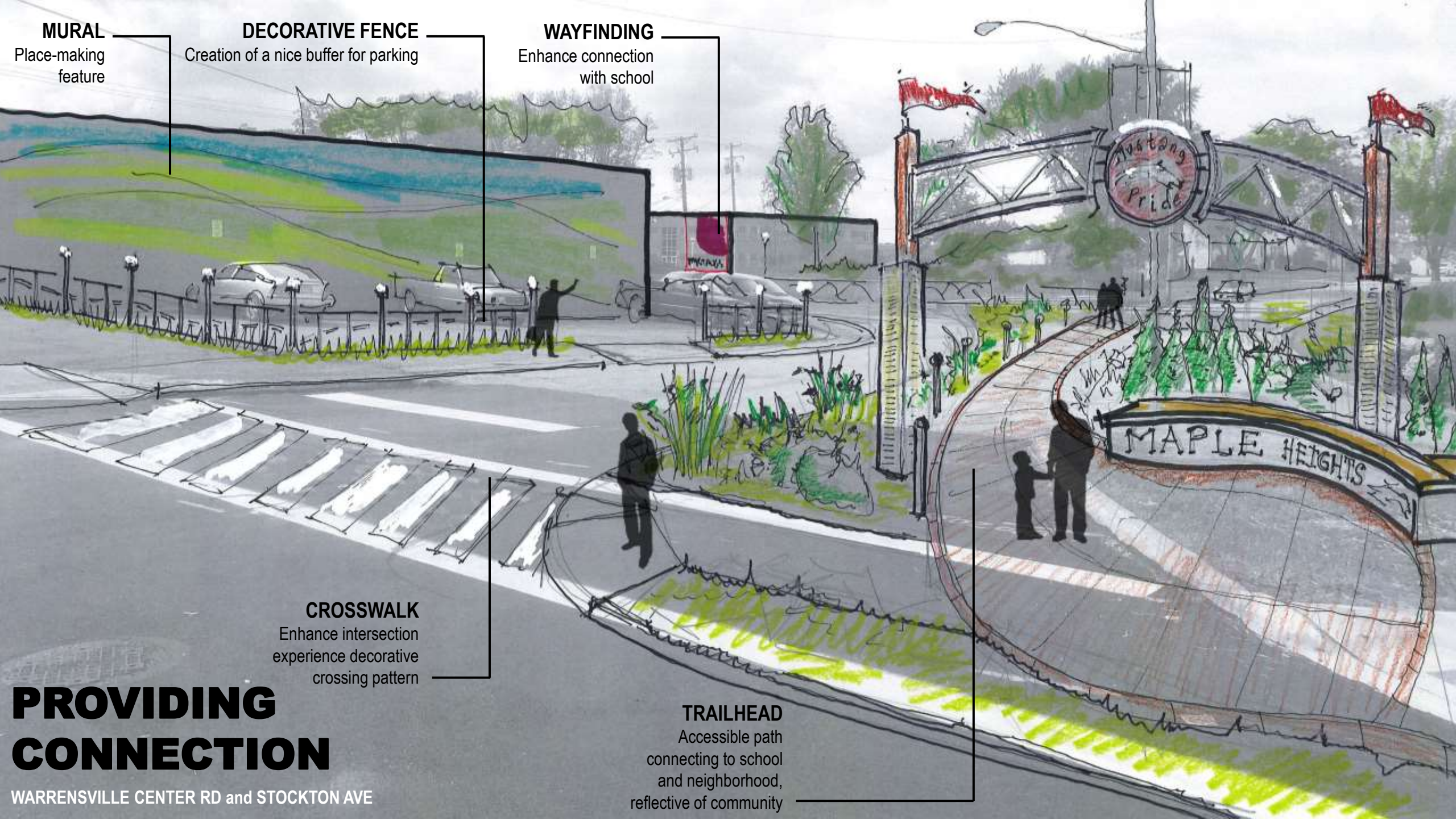
Enhance intersection  
experience decorative  
crossing pattern

## TRAILHEAD

Accessible path  
connecting to school  
and neighborhood,  
reflective of community

# PROVIDING CONNECTION

WARRENSVILLE CENTER RD and STOCKTON AVE





# THANK

# YOU!











**TRANSPORTATION PLANNING IMPACT**



# Center Ridge Road

COMPLETE STREETS & CORRIDOR ENHANCEMENT PLAN

ISSUED: APRIL 12, 2017



A COLLABORATION BETWEEN THE CITIES  
OF FAIRVIEW PARK & ROCKY RIVER





Signage & enhancements can convey the district's brand & identity



Effective parking lot buffers can refocus the streetscape away from vehicular traffic



Landscaped medians can reduce pavement, slow traffic and serve as a gateway element

### Gateway Signage - \$\$

- LOCATE IN MEDIAN (LONG TERM)
- INSTALL ALONG RIGHT-OF-WAY (NEAR TERM) AND LANDSCAPE TO DEMONSTRATE & ESTABLISH DISTRICT ENTRANCE

### Parking Lot Frontage - \$\$\$\$

- BLOCK OFF PARKING SPACES AS A TEMPORARY MEASURE TO TEST IDEAS AND REDUCTION
- INCORPORATE PUBLIC ART AS SCREENING ELEMENTS - HOLD COMPETITION TO PROVIDE OPPORTUNITIES FOR RESIDENTS

### Median Element - \$\$\$

- REDUCE PAVEMENT
- ENGINEER TO MINIMALLY IMPACT SURFACE DRAINAGE
- COORDINATE WITH DRIVEWAYS
- CAN BE USED TO LIMIT LEFT TURN MOVEMENTS



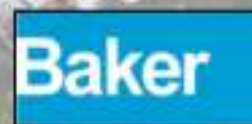


# Downtown Euclid TLCI

## Transportation and Redevelopment Plan

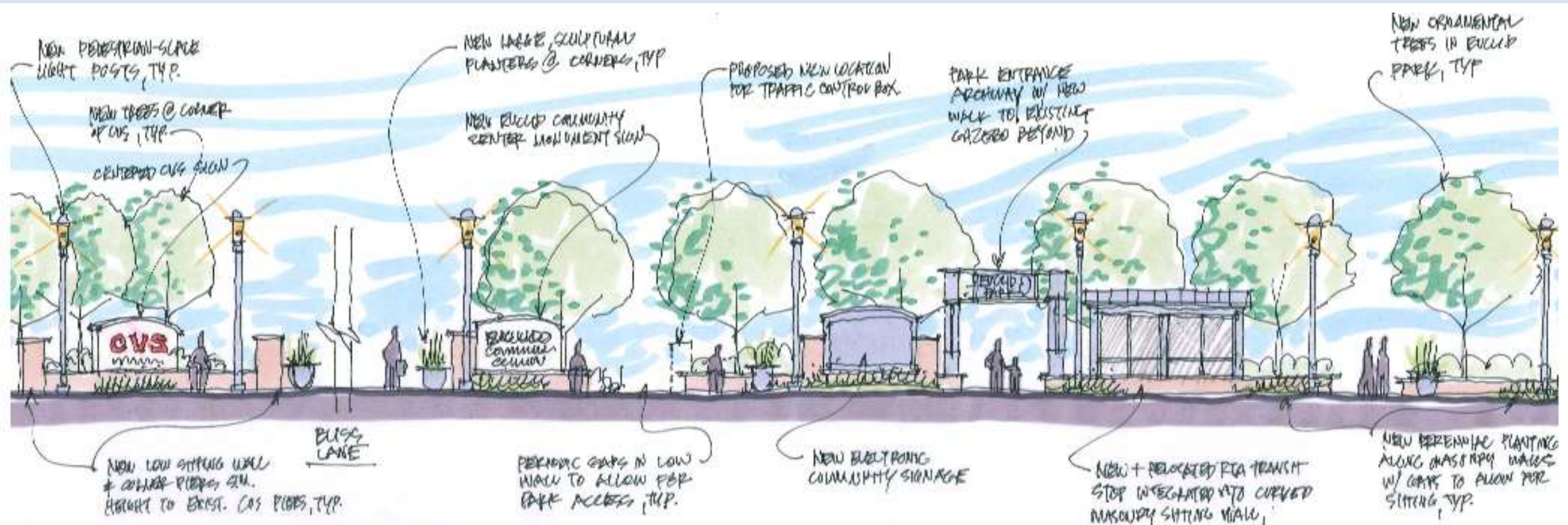


**Euclid, Ohio**  
**December, 2007**





# LAKESHORE BABBITT STREETSCAPE



COMPLETED APRIL 2009



# BARBERTON'S MAGIC MILE

CONNECTING HISTORY THROUGH  
MULTI-MODAL INFRASTRUCTURE



BARBERTON  
COMMUNITY FOUNDATION

NOVEMBER 2014



COMPLETED JUNE 2015



PROPOSED





PROPOSED



COMPLETED JUNE 2015





**YOUR EXPERIENCE**





What it could be incrementally

Time folks reaction

Now that you've reacted high level, where could some of that stuff fit, help us prioritize... keep in mind realistic timeline, provide a guide of costs to administration



What it could be incrementally